




 Single Family

 1039 SQFT

 3 Beds

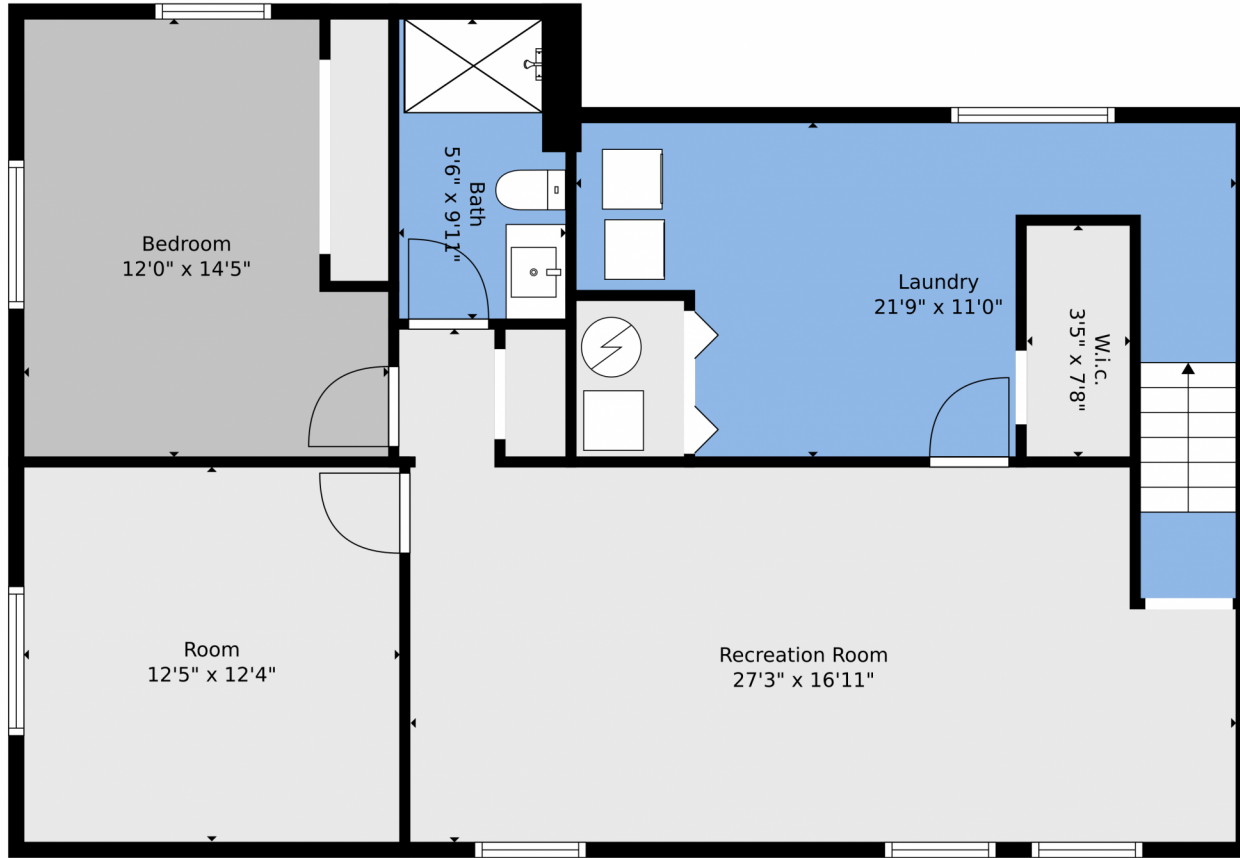
 2 Baths



Taylor Haas
303-665-7368
taylorh@coloradorpm.com
<https://www.coloradorpm.com/available-rental-properties-denver>



5055 Sodbuster Trail, Colorado Springs, CO 80917 – Lower Level



TOTAL: 2062 sq. ft
BELOW GROUND: 1011 sq. ft, FLOOR 2: 1051 sq. ft
EXCLUDED AREAS: PORCH: 30 sq. ft, PATIO: 140 sq. ft, GARAGE: 475 sq. ft
Floor Plan Created By V1photos.com, Measurements Deamed Highly Reliable But Not Guaranteed.



Disclaimer: Sizes and Dimensions are Approximate, Actual May Vary.

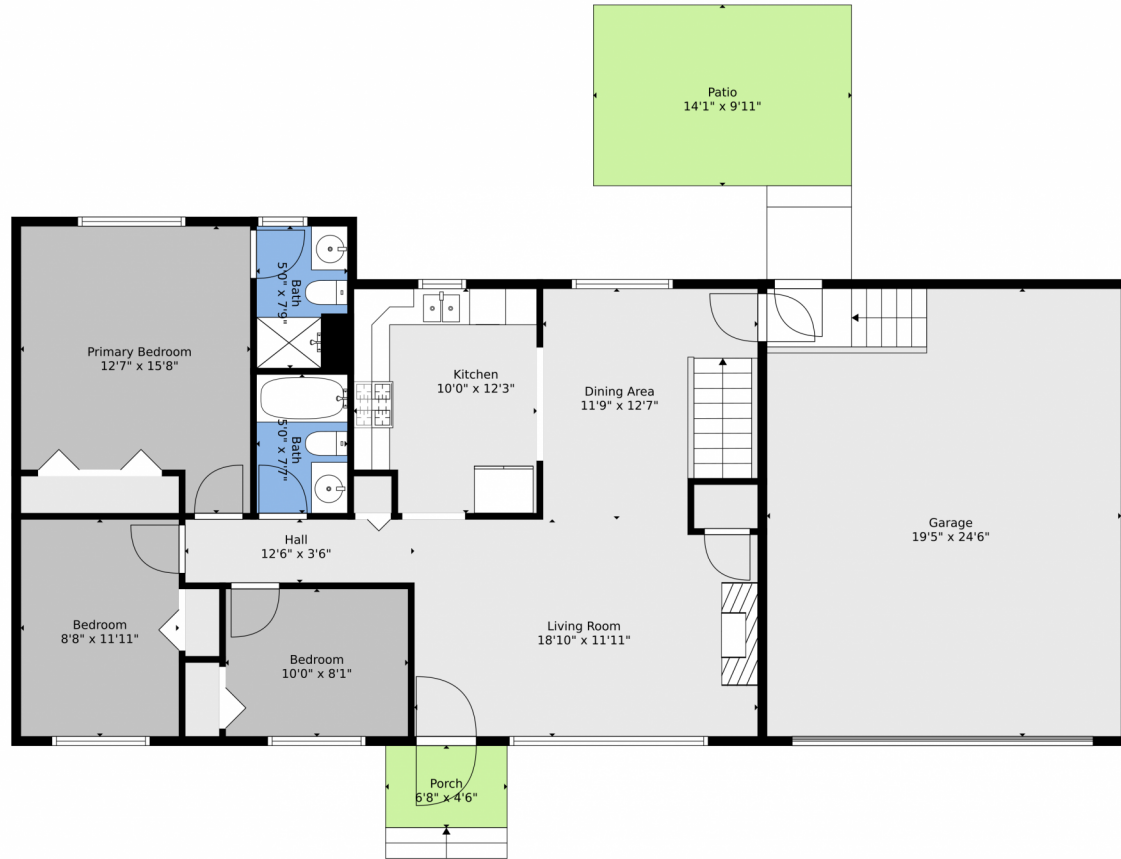


Taylor Haas
303-665-7368
taylorh@coloradorpm.com
<https://www.coloradorpm.com/available-rental-properties-denver>



Scan code
for more
property
details

5055 Sodbuster Trail, Colorado Springs, CO 80917 – Main Level



TOTAL: 2062 sq. ft
BELOW GROUND: 1011 sq. ft, FLOOR 2: 1051 sq. ft
EXCLUDED AREAS: PORCH: 30 sq. ft, PATIO: 140 sq. ft, GARAGE: 475 sq. ft
Floor Plan Created By V1photos.com, Measurements Deamed Highly Reliable But Not Guaranteed.



Disclaimer: Sizes and Dimensions are Approximate, Actual May Vary.



Taylor Haas
303-665-7368
taylorh@coloradorpm.com
<https://www.coloradorpm.com/available-rental-properties-denver>



5055 Sodbuster Trail, Colorado Springs, CO 80917 – All Levels



TOTAL: 2062 sq. ft
BELOW GROUND: 1011 sq. ft, FLOOR 2: 1051 sq. ft
EXCLUDED AREAS: PORCH: 30 sq. ft, PATIO: 140 sq. ft, GARAGE: 475 sq. ft
Floor Plan Created By V1photos.com, Measurements Deamed Highly Reliable But Not Guaranteed.



Disclaimer: Sizes and Dimensions are Approximate, Actual May Vary.



Taylor Haas
303-665-7368
taylorh@coloradorpm.com
<https://www.coloradorpm.com/available-rental-properties-denver>



Scan code
for more
property
details