



2200 Horseshoe Circle  
 Longmont, CO 80504  
 COMMUNITY: Horseshoe Park



Single Family



3332 SQFT



3 Beds



3 Baths



2 Car



5.98 Acre



**April Neuhaus**

970-213-9394

april@aprilneuhaus.com

<https://www.neuhausrealestate.com/>



Scan code  
 for more  
 property  
 details



# 2200 Horseshoe Circle, Longmont, CO 80504 – Main Level



**TOTAL: 3068 sq. ft**  
BELOW GROUND: 1433 sq. ft, FLOOR 2: 1635 sq. ft, FLOOR 3: 0 sq. ft  
EXCLUDED AREAS: STORAGE: 405 sq. ft, ELECTRICAL ROOM: 35 sq. ft, PATIO: 966 sq. ft,  
GARAGE: 656 sq. ft, PORCH: 229 sq. ft, DECK: 361 sq. ft,  
STABLE: 1336 sq. ft, CARPORT: 759 sq. ft

Floor Plan Created By V1photos.com. Measurements Deamed Highly Reliable But Not Guaranteed.



Disclaimer: Sizes and Dimensions are Approximate, Actual May Vary.



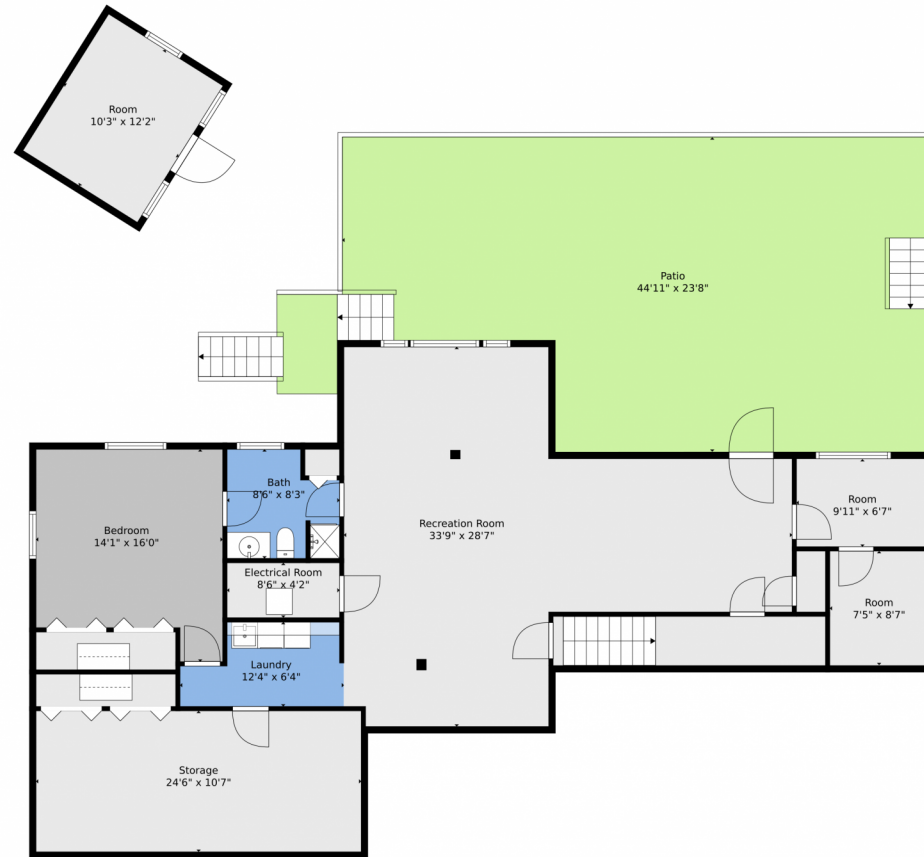
**April Neuhaus**  
970-213-9394  
april@aprilneuhaus.com  
<https://www.neuhausrealestate.com/>



Scan code  
for more  
property  
details



# 2200 Horseshoe Circle, Longmont, CO 80504 – Lower Level



**TOTAL: 3068 sq. ft**  
BELOW GROUND: 1433 sq. ft, FLOOR 2: 1635 sq. ft, FLOOR 3: 0 sq. ft  
EXCLUDED AREAS: STORAGE: 405 sq. ft, ELECTRICAL ROOM: 35 sq. ft, PATIO: 966 sq. ft,  
GARAGE: 656 sq. ft, PORCH: 229 sq. ft, DECK: 361 sq. ft,  
STABLE: 1336 sq. ft, CARPORT: 759 sq. ft

Floor Plan Created By V1photos.com, Measurements Deamed Highly Reliable But Not Guaranteed.

Disclaimer: Sizes and Dimensions are Approximate, Actual May Vary.



**April Neuhaus**  
970-213-9394  
april@aprilneuhaus.com  
<https://www.neuhausrealestate.com/>



Scan code  
for more  
property  
details

# 2200 Horseshoe Circle, Longmont, CO 80504 – Barn



**TOTAL: 3068 sq. ft**  
BELOW GROUND: 1433 sq. ft, FLOOR 2: 1635 sq. ft, FLOOR 3: 0 sq. ft  
EXCLUDED AREAS: STORAGE: 405 sq. ft, ELECTRICAL ROOM: 35 sq. ft, PATIO: 966 sq. ft,  
GARAGE: 656 sq. ft, PORCH: 229 sq. ft, DECK: 361 sq. ft,  
STABLE: 1336 sq. ft, CARPORT: 759 sq. ft

Floor Plan Created By V1photos.com, Measurements Deamed Highly Reliable But Not Guaranteed.



Disclaimer: Sizes and Dimensions are Approximate, Actual May Vary.



**April Neuhaus**  
970-213-9394  
april@aprilneuhaus.com  
<https://www.neuhausrealestate.com/>



Scan code  
for more  
property  
details

# 2200 Horseshoe Circle, Longmont, CO 80504 – All Levels



**TOTAL: 3068 sq. ft**  
BELOW GROUND: 1433 sq. ft, FLOOR 2: 1635 sq. ft, FLOOR 3: 0 sq. ft  
EXCLUDED AREAS: STORAGE: 405 sq. ft, ELECTRICAL ROOM: 35 sq. ft, PATIO: 966 sq. ft,  
GARAGE: 656 sq. ft, PORCH: 229 sq. ft, DECK: 361 sq. ft,  
STABLE: 1336 sq. ft, CARPORT: 759 sq. ft

Floor Plan Created By V1photos.com, Measurements Deamed Highly Reliable But Not Guaranteed.



Disclaimer: Sizes and Dimensions are Approximate, Actual May Vary.



**April Neuhaus**  
970-213-9394  
april@aprilneuhaus.com  
<https://www.neuhausrealestate.com/>



Scan code  
for more  
property  
details