

2087 Manitou Court #102

Loveland, CO 80538


COMMUNITY: Emerald Glen

MLS # 5978634


PRICE \$385,000



 Townhouse

 1784 SQFT

 3 Beds

 2/1 Baths

 2 Car

PROPERTY DETAILS

Move right into this meticulously maintained townhome in Emerald Glen. Gleaming hardwood floors and crown molding greet you as you walk through the front door. Kitchen offers updated cabinets, granite counters, tile backsplash & floors, breakfast bar & stainless steel appliances. Cozy up to the gas fireplace in the upcoming winter months. Primary bedroom features a unique loft built-in, attached full bathroom & walk-in closet. Second upstairs bedroom w/ walk-in closet & full hall bath completes the upper level. Flex space in the finished basement could be used for a living area, playroom, gym or home office. Enjoy a cup of coffee on your covered back patio. Keep your car cool in the summer, snow-free in the winter, or use the detached one-car garage for extra storage!



Michael Rittner

303-929-1667

michael@rittnerrealty.com

<https://www.rittnerrealtyinc.com>

Scan code
for more
property
details



2087 Manitou Court #102, Loveland, CO 80538 – Main Level



TOTAL: 1562 sq. ft
BELOW GROUND: 390 sq. ft, FLOOR 2: 586 sq. ft, FLOOR 3: 586 sq. ft
EXCLUDED AREAS: UTILITY: 173 sq. ft, PATIO: 91 sq. ft, PORCH: 33 sq. ft,
BAY WINDOW: 7 sq. ft

Floor Plan Created By V1photos.com, Measurements Deamed Highly Reliable But Not Guaranteed.

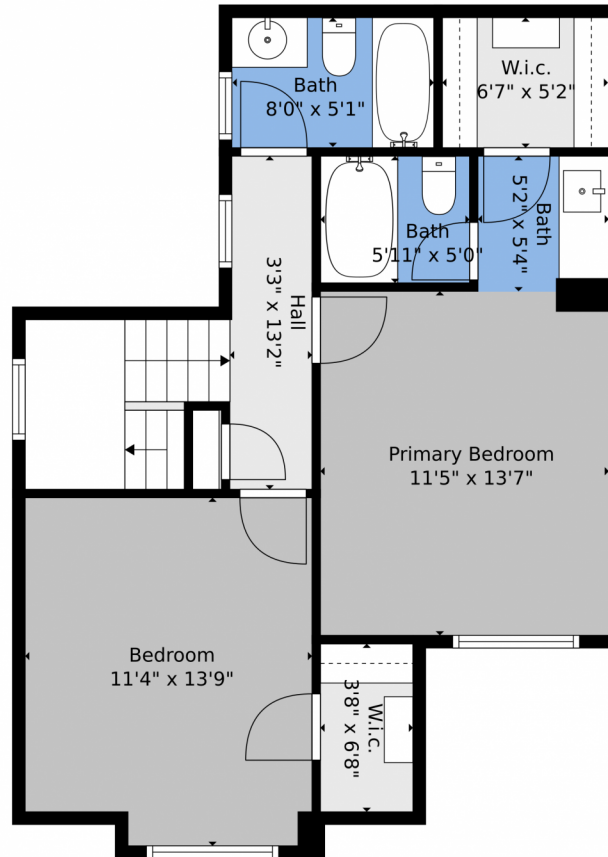
Disclaimer: Sizes and Dimensions are Approximate, Actual May Vary.



Michael Rittner
303-929-1667
michael@rittnerrealty.com
<https://www.rittnerrealtyinc.com>



2087 Manitou Court #102, Loveland, CO 80538 – Upper Level



TOTAL: 1562 sq. ft
BELOW GROUND: 390 sq. ft, FLOOR 2: 586 sq. ft, FLOOR 3: 586 sq. ft
EXCLUDED AREAS: UTILITY: 173 sq. ft, PATIO: 91 sq. ft, PORCH: 33 sq. ft,
BAY WINDOW: 7 sq. ft

Floor Plan Created By V1photos.com, Measurements Deamed Highly Reliable But Not Guaranteed.

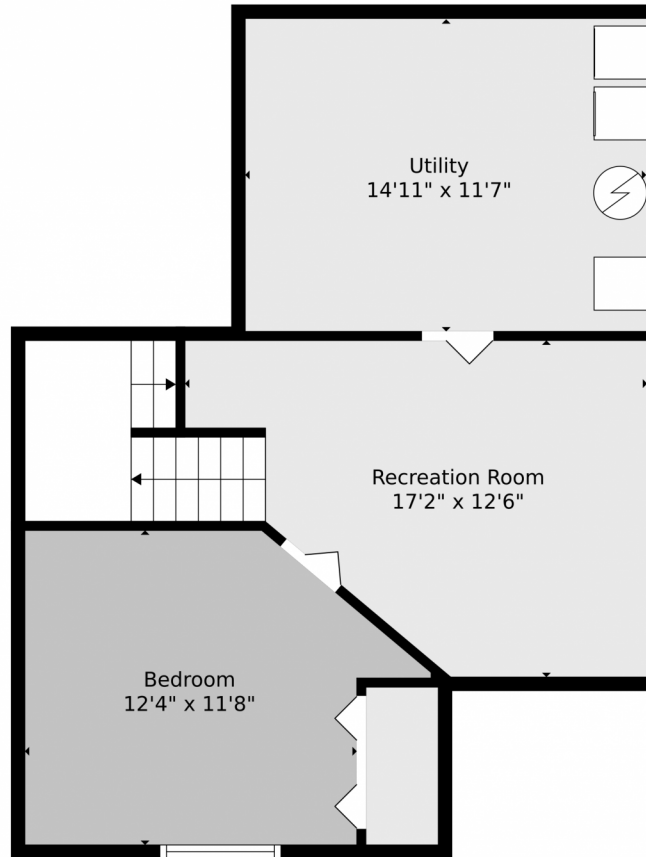
Disclaimer: Sizes and Dimensions are Approximate, Actual May Vary.



Michael Rittner
303-929-1667
michael@rittnerrealty.com
<https://www.rittnerrealtyinc.com>



Scan code
for more
property
details



TOTAL: 1562 sq. ft
BELOW GROUND: 390 sq. ft, FLOOR 2: 586 sq. ft, FLOOR 3: 586 sq. ft
EXCLUDED AREAS: UTILITY: 173 sq. ft, PATIO: 91 sq. ft, PORCH: 33 sq. ft,
BAY WINDOW: 7 sq. ft

Floor Plan Created By V1photos.com, Measurements Deamed Highly Reliable But Not Guaranteed.

Disclaimer: Sizes and Dimensions are Approximate, Actual May Vary.

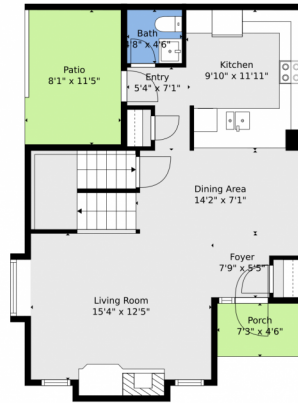


Michael Rittner
303-929-1667
michael@rittnerrealty.com
<https://www.rittnerrealtyinc.com>

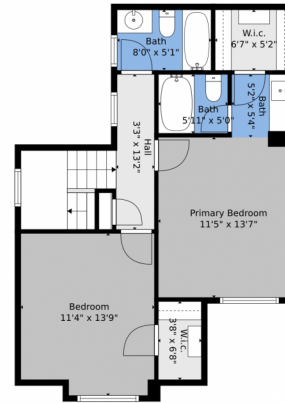


Scan code
for more
property
details

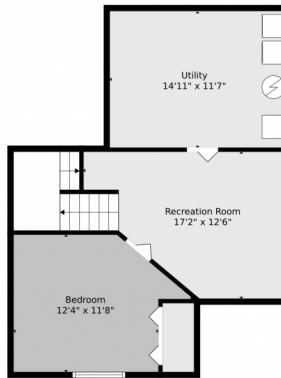
2087 Manitou Court #102, Loveland, CO 80538 – All Levels



Floor 2



Floor 3



Floor 1



TOTAL: 1562 sq. ft
BELOW GROUND: 390 sq. ft, FLOOR 2: 586 sq. ft, FLOOR 3: 586 sq. ft
EXCLUDED AREAS: UTILITY: 173 sq. ft, PATIO: 91 sq. ft, PORCH: 33 sq. ft,
BAY WINDOW: 7 sq. ft

Floor Plan Created By V1photos.com, Measurements Deamed Highly Reliable But Not Guaranteed.

Disclaimer: Sizes and Dimensions are Approximate, Actual May Vary.



Michael Rittner
303-929-1667
michael@rittnerrealty.com
<https://www.rittnerrealtyinc.com>

