



1620 McArthur Avenue
Colorado Springs, CO 80909



Single Family



2104 SQFT



4 Beds



2 Baths



1 Car



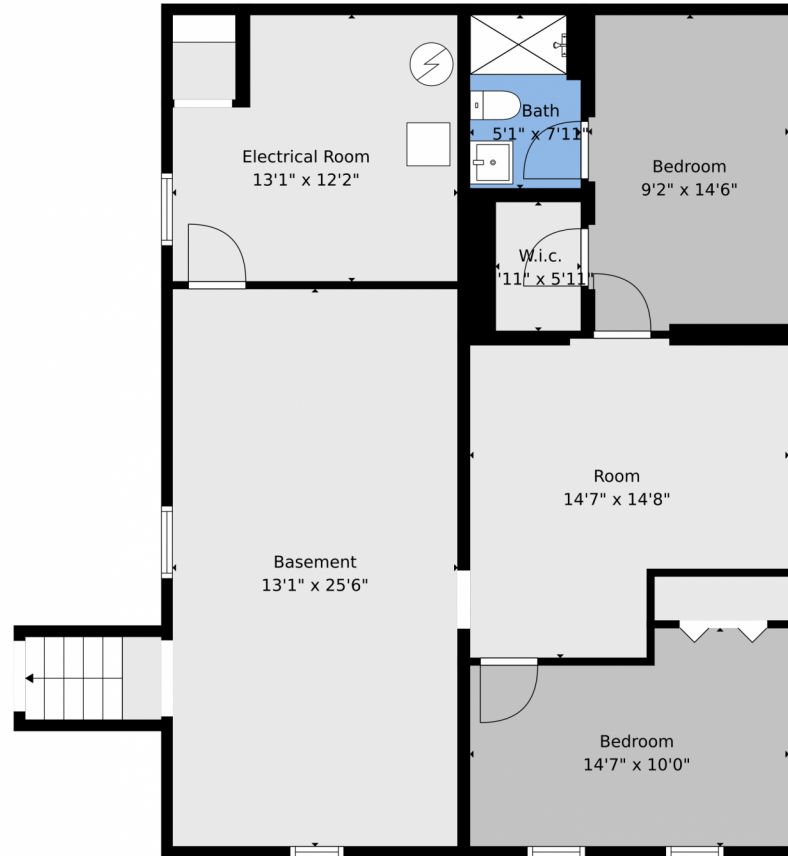
0.3 Acre

Terry Moss
720-651-1734
tmoss@wedgewoodhomes.com



Scan code
for more
property
details

1620 McArthur Avenue, Colorado Springs, CO 80909 – Lower Level



TOTAL: 1997 sq. ft
BELOW GROUND: 942 sq. ft, FLOOR 2: 1055 sq. ft
EXCLUDED AREAS: ELECTRICAL ROOM: 149 sq. ft, UNDEFINED: 11 sq. ft, DECK: 13 sq. ft,
PORCH: 94 sq. ft

Floor Plan Created By V1photos.com, Measurements Deamed Highly Reliable But Not Guaranteed.



Disclaimer: Sizes and Dimensions are Approximate, Actual May Vary.

Terry Moss
720-651-1734
tmoss@wedgewoodhomes.com



1620 McArthur Avenue, Colorado Springs, CO 80909 – Main Level



TOTAL: 1997 sq. ft
BELOW GROUND: 942 sq. ft, FLOOR 2: 1055 sq. ft
EXCLUDED AREAS: ELECTRICAL ROOM: 149 sq. ft, UNDEFINED: 11 sq. ft, DECK: 13 sq. ft,
PORCH: 94 sq. ft

Floor Plan Created By V1photos.com. Measurements Deamed Highly Reliable But Not Guaranteed.



Disclaimer: Sizes and Dimensions are Approximate, Actual May Vary.

Terry Moss
720-651-1734
tmoss@wedgewoodhomes.com



Scan code
for more
property
details

1620 McArthur Avenue, Colorado Springs, CO 80909 – All Levels



TOTAL: 1997 sq. ft
BELOW GROUND: 942 sq. ft, FLOOR 2: 1055 sq. ft
EXCLUDED AREAS: ELECTRICAL ROOM: 149 sq. ft, UNDEFINED: 11 sq. ft, DECK: 13 sq. ft,
PORCH: 94 sq. ft

Floor Plan Created By V1photos.com, Measurements Deamed Highly Reliable But Not Guaranteed.



Disclaimer: Sizes and Dimensions are Approximate, Actual May Vary.

Terry Moss
720-651-1734
tmoss@wedgewoodhomes.com

