



Single Family



2192 SQFT



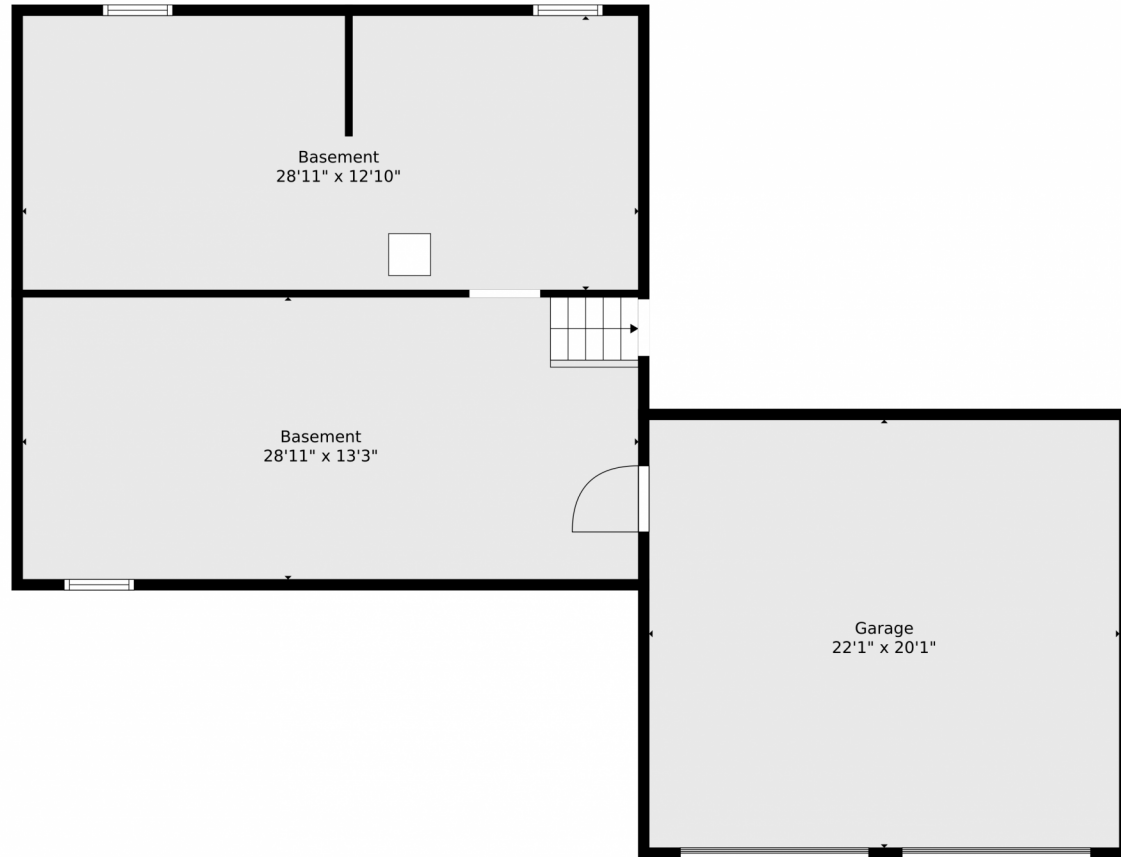
Philip Cooper  
970-232-4844  
philip.cooper@windermere.com



Scan code  
for more  
property  
details



# 1304 Westridge Drive, Loveland, CO 80537 – Lower Level



**TOTAL: 2332 sq. ft**  
BELOW GROUND: 0 sq. ft, FLOOR 2: 664 sq. ft, FLOOR 3: 767 sq. ft, FLOOR 4: 901 sq. ft  
EXCLUDED AREAS: GARAGE: 444 sq. ft, BASEMENT: 766 sq. ft, PORCH: 37 sq. ft

Floor Plan Created By V1photos.com. Measurements Deamed Highly Reliable But Not Guaranteed.

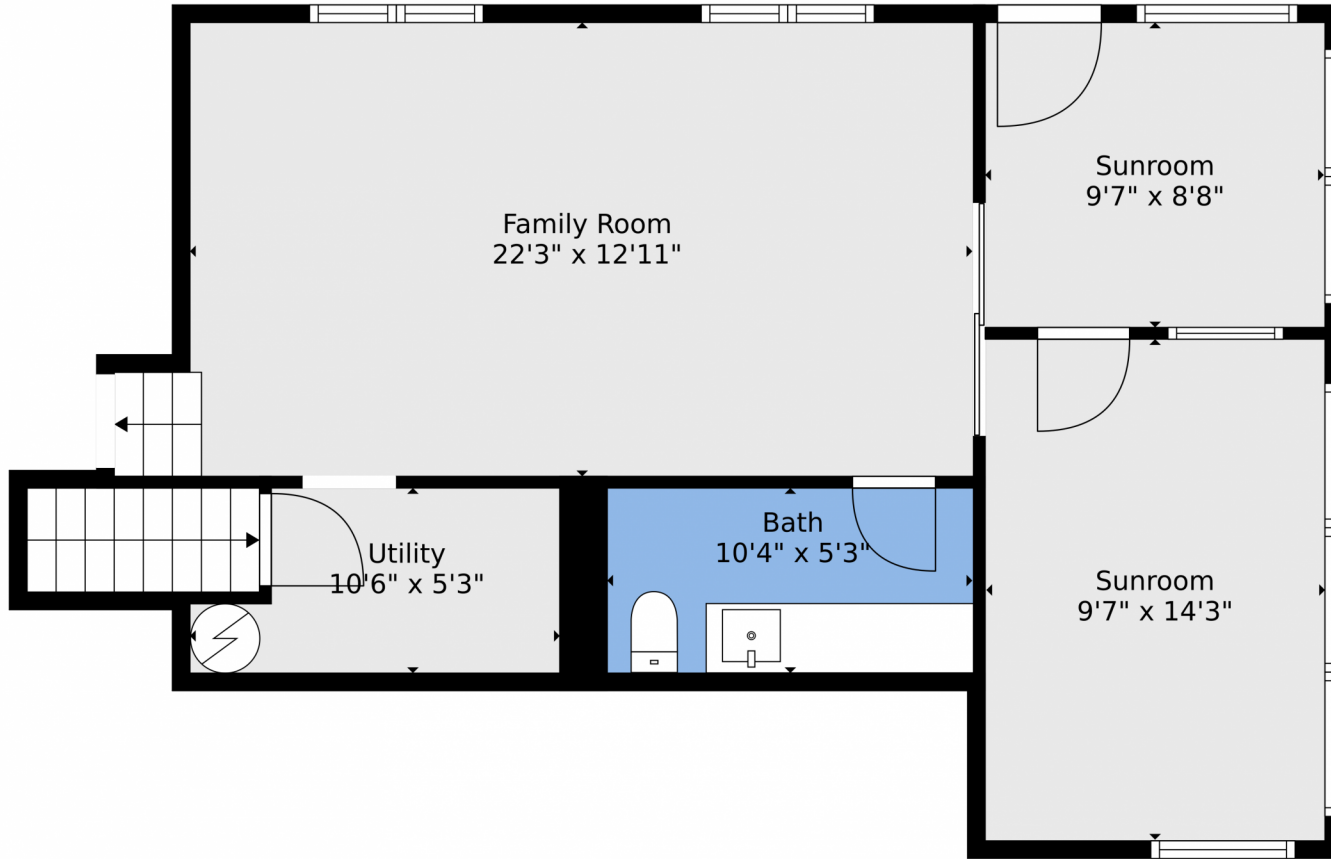
Disclaimer: Sizes and Dimensions are Approximate, Actual May Vary.



**Philip Cooper**  
970-232-4844  
philip.cooper@windermere.com



1304 Westridge Drive, Loveland, CO 80537 – Main Level 1



**TOTAL: 2332 sq. ft**  
BELOW GROUND: 0 sq. ft, FLOOR 2: 664 sq. ft, FLOOR 3: 767 sq. ft, FLOOR 4: 901 sq. ft  
EXCLUDED AREAS: GARAGE: 444 sq. ft, BASEMENT: 766 sq. ft, PORCH: 37 sq. ft

Floor Plan Created By V1photos.com. Measurements Deamed Highly Reliable But Not Guaranteed.

Disclaimer: Sizes and Dimensions are Approximate, Actual May Vary.



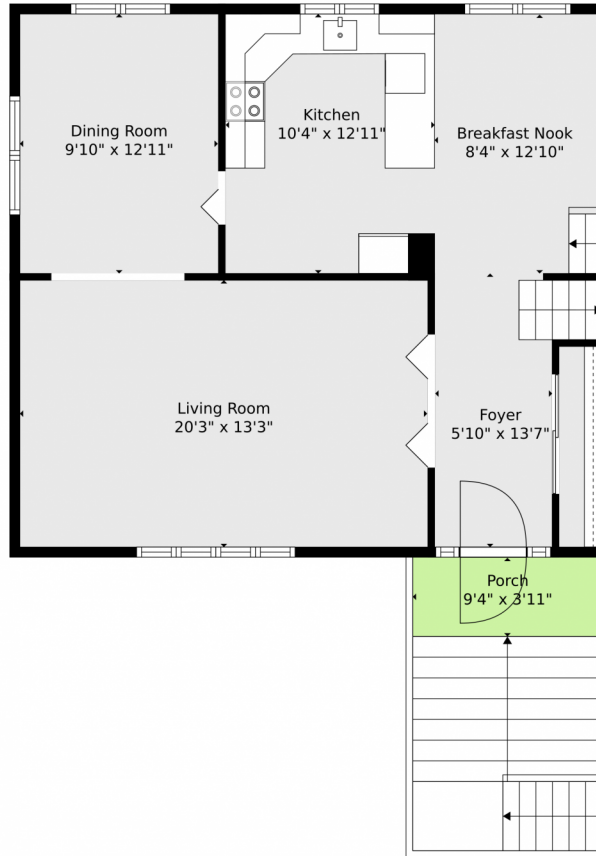
**Philip Cooper**  
970-232-4844  
philip.cooper@windermere.com



Scan code  
for more  
property  
details



# 1304 Westridge Drive, Loveland, CO 80537 – Main Level 2



**TOTAL: 2332 sq. ft**  
BELOW GROUND: 0 sq. ft, FLOOR 2: 664 sq. ft, FLOOR 3: 767 sq. ft, FLOOR 4: 901 sq. ft  
EXCLUDED AREAS: GARAGE: 444 sq. ft, BASEMENT: 766 sq. ft, PORCH: 37 sq. ft

Floor Plan Created By V1photos.com. Measurements Deamed Highly Reliable But Not Guaranteed.

Disclaimer: Sizes and Dimensions are Approximate, Actual May Vary.

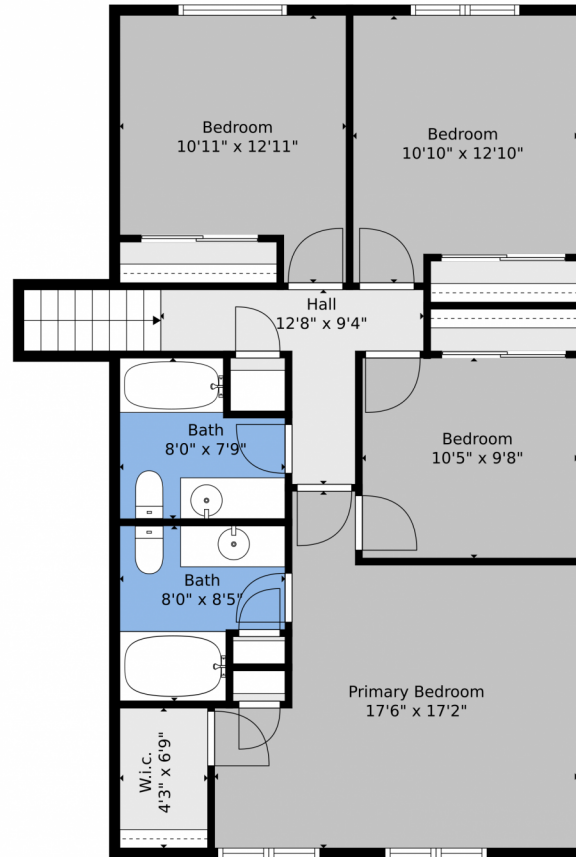


**Philip Cooper**  
970-232-4844  
philip.cooper@windermere.com





# 1304 Westridge Drive, Loveland, CO 80537 – Upper Level



**TOTAL: 2332 sq. ft**  
BELOW GROUND: 0 sq. ft, FLOOR 2: 664 sq. ft, FLOOR 3: 767 sq. ft, FLOOR 4: 901 sq. ft  
EXCLUDED AREAS: GARAGE: 444 sq. ft, BASEMENT: 766 sq. ft, PORCH: 37 sq. ft

Floor Plan Created By V1photos.com, Measurements Deamed Highly Reliable But Not Guaranteed.

Disclaimer: Sizes and Dimensions are Approximate, Actual May Vary.



**Philip Cooper**  
970-232-4844  
philip.cooper@windermere.com



# 1304 Westridge Drive, Loveland, CO 80537 – All Levels



**TOTAL: 2332 sq. ft**  
BELOW GROUND: 0 sq. ft, FLOOR 2: 664 sq. ft, FLOOR 3: 767 sq. ft, FLOOR 4: 901 sq. ft  
EXCLUDED AREAS: GARAGE: 444 sq. ft, BASEMENT: 766 sq. ft, PORCH: 37 sq. ft

Floor Plan Created By V1photos.com. Measurements Deamed Highly Reliable But Not Guaranteed.

Disclaimer: Sizes and Dimensions are Approximate, Actual May Vary.



**Philip Cooper**  
970-232-4844  
philip.cooper@windermere.com



Scan code  
for more  
property  
details

