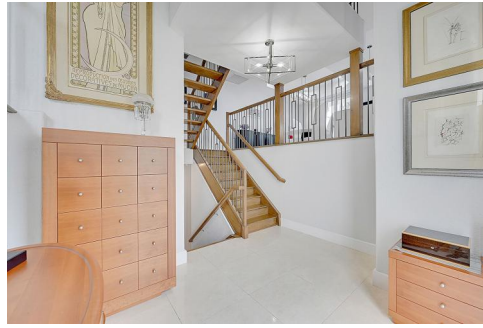




1778 Bay Dr  
 Pompano Beach, FL 33062  
 COMMUNITY: Hillsboro Bay By The Sea

MLS  
 # F10461272  
 PRICE  
 \$1,650,000



Townhouse 3012 SQFT 4 Beds 3/1 Baths 2 Car

## PROPERTY DETAILS

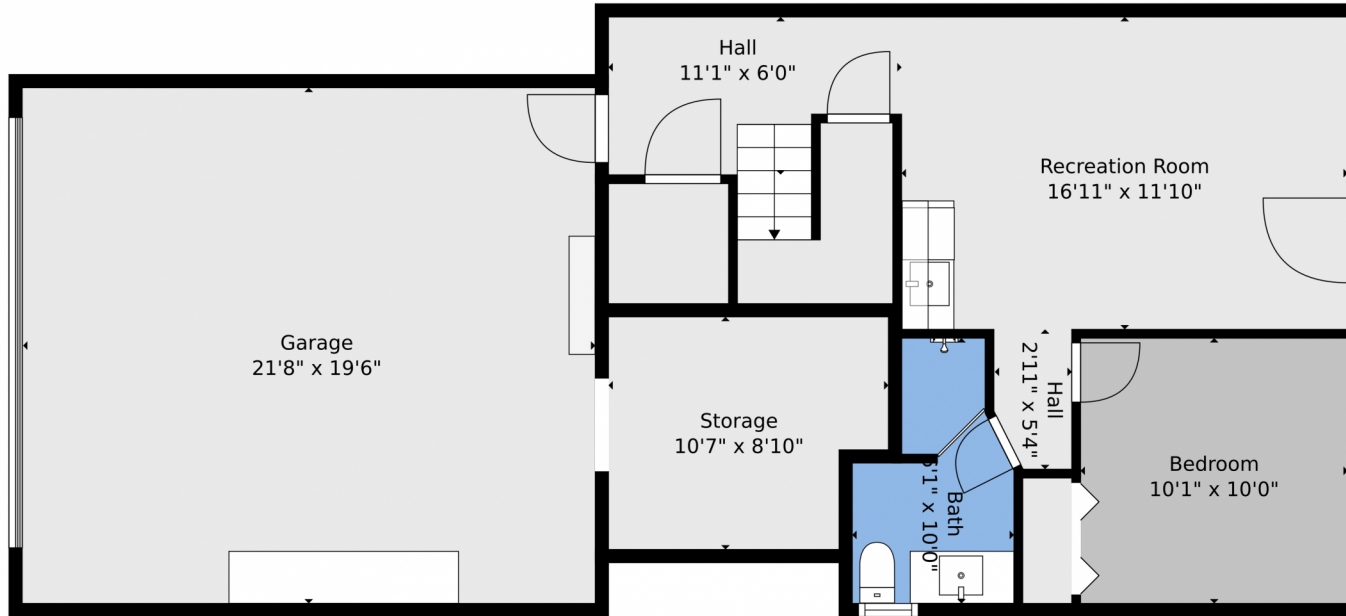
This beautifully remodeled three-level corner townhome in the exclusive gated community of Hillsboro by the Sea offers beach access and the privacy of a single-family home. It features a private side yard, heated swimming pool, and an open floor plan with high ceilings. The formal living room includes a wet bar and fireplace, while the gourmet kitchen boasts top-of-the-line appliances. The luxurious primary suite has a sitting area and a second fireplace. With 4 bedrooms, 3.5 baths, and a family room, this spacious residence also includes a 2-car garage and a new whole-house generator. Recent community restoration and painting enhance its appeal, making it perfect for comfortable living.



**Kim Winters**  
 954-695-2416  
 kimwinters1@gmail.com



1778 Bay Dr, Pompano Beach, FL 33062 – 1st Level



**TOTAL: 2681 sq. ft**  
FLOOR 1: 508 sq. ft, FLOOR 2: 948 sq. ft, FLOOR 3: 1225 sq. ft  
EXCLUDED AREAS: GARAGE: 423 sq. ft, STORAGE: 86 sq. ft, BALCONY: 249 sq. ft  
Floor Plan Created By V1photos.com, Measurements Deamed Highly Reliable But Not Guaranteed.



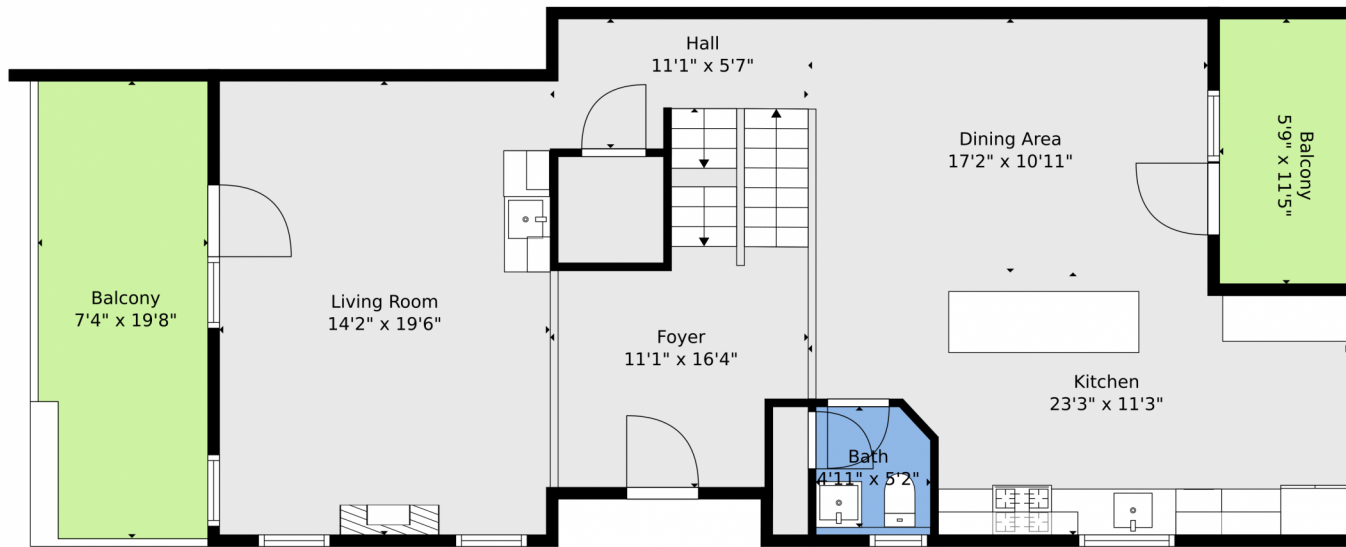
Disclaimer: Sizes and Dimensions are Approximate, Actual May Vary.



**Kim Winters**  
954-695-2416  
kimwinters1@gmail.com



# 1778 Bay Dr, Pompano Beach, FL 33062 – 2nd Level



**TOTAL: 2681 sq. ft**  
FLOOR 1: 508 sq. ft, FLOOR 2: 948 sq. ft, FLOOR 3: 1225 sq. ft  
EXCLUDED AREAS: GARAGE: 423 sq. ft, STORAGE: 86 sq. ft, BALCONY: 249 sq. ft  
Floor Plan Created By V1photos.com, Measurements Deamed Highly Reliable But Not Guaranteed.



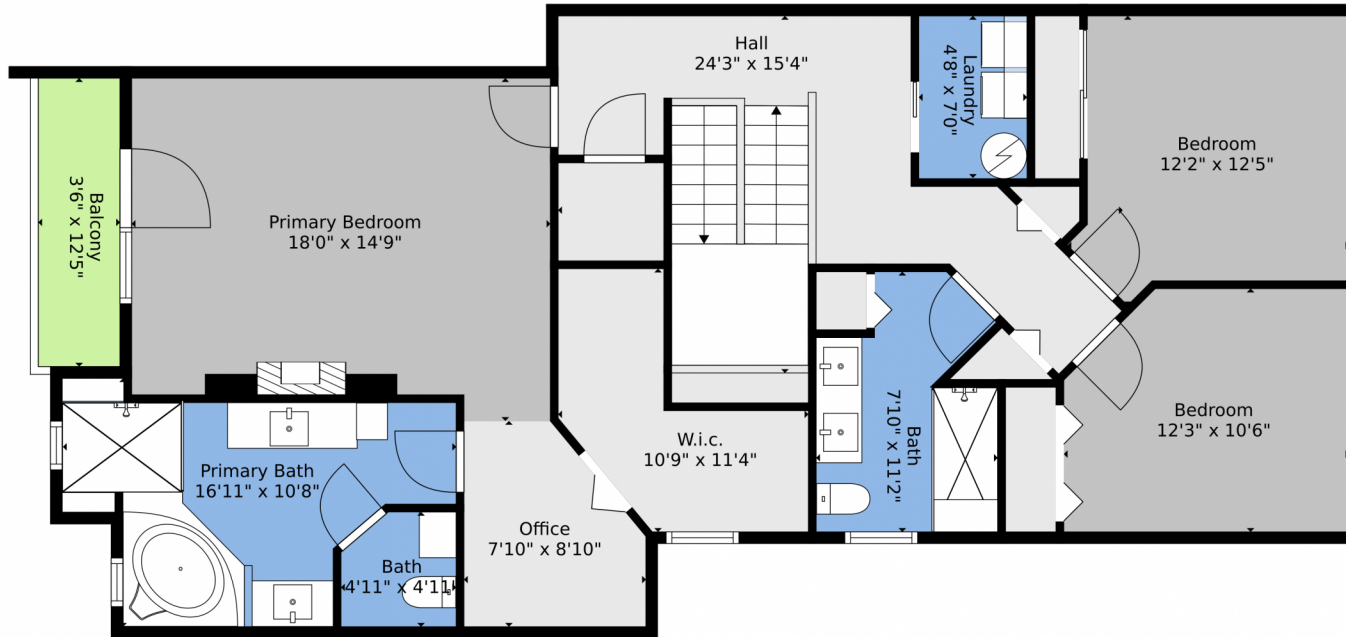
Disclaimer: Sizes and Dimensions are Approximate, Actual May Vary.



**Kim Winters**  
954-695-2416  
kimwinters1@gmail.com



1778 Bay Dr, Pompano Beach, FL 33062 – 3rd Level



**TOTAL: 2681 sq. ft**  
FLOOR 1: 508 sq. ft, FLOOR 2: 948 sq. ft, FLOOR 3: 1225 sq. ft  
EXCLUDED AREAS: GARAGE: 423 sq. ft, STORAGE: 86 sq. ft, BALCONY: 249 sq. ft  
Floor Plan Created By V1photos.com, Measurements Deamed Highly Reliable But Not Guaranteed.



Disclaimer: Sizes and Dimensions are Approximate, Actual May Vary.

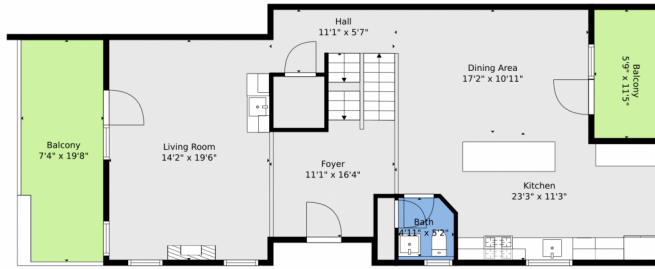


**Kim Winters**  
954-695-2416  
kimwinters1@gmail.com

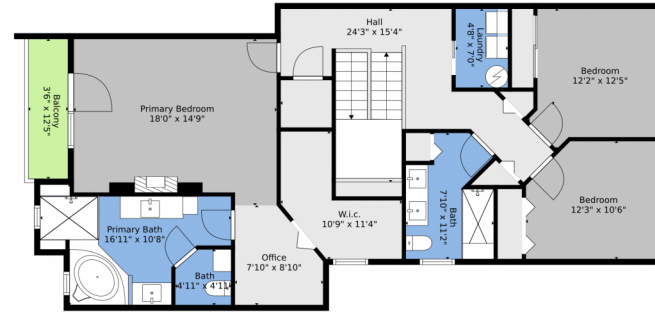


Scan code  
for more  
property  
details

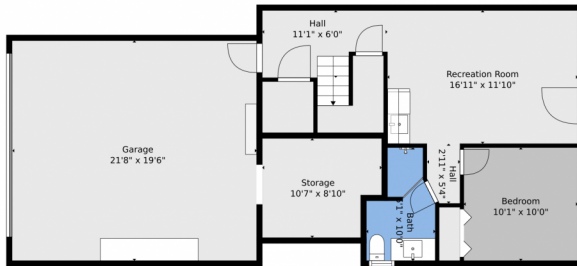
# 1778 Bay Dr, Pompano Beach, FL 33062 – All Levels



Floor 2



Floor 3



Floor 1



**TOTAL: 2681 sq. ft**  
FLOOR 1: 508 sq. ft, FLOOR 2: 948 sq. ft, FLOOR 3: 1225 sq. ft  
EXCLUDED AREAS: GARAGE: 423 sq. ft, STORAGE: 86 sq. ft, BALCONY: 249 sq. ft

Floor Plan Created By V1photos.com, Measurements Deamed Highly Reliable But Not Guaranteed.



Disclaimer: Sizes and Dimensions are Approximate, Actual May Vary.



**Kim Winters**  
954-695-2416  
kimwinters1@gmail.com



Scan code  
for more  
property  
details

