




 Single Family

 2375 SQFT

 4 Beds

 3 Baths

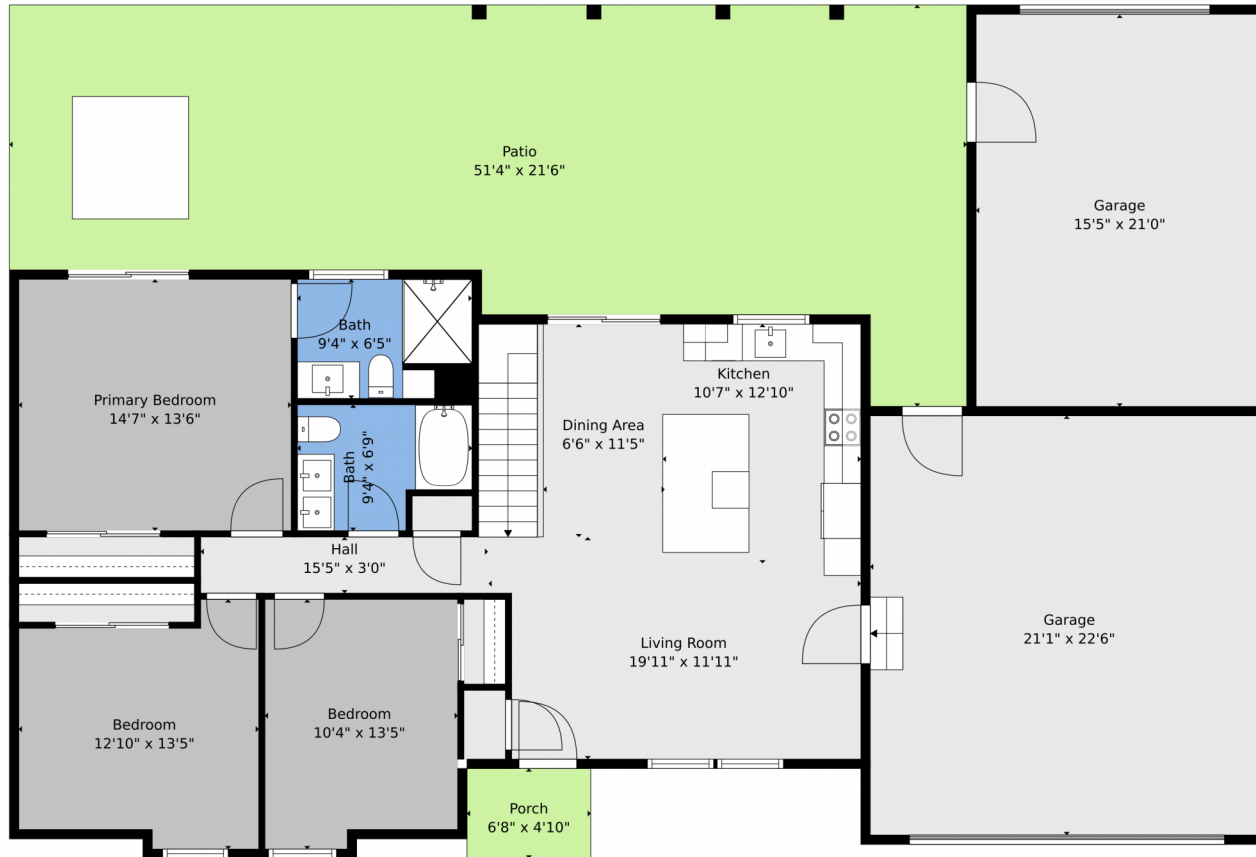
 2 Car



Alexis Foster  
970-310-6999  
alexisfoster@windermere.com



5620 Janna Drive, Loveland, CO 80538 – Main Level



**TOTAL: 2260 sq. ft**  
BELOW GROUND: 1047 sq. ft, FLOOR 2: 1213 sq. ft  
EXCLUDED AREAS: STORAGE: 173 sq. ft, GARAGE: 796 sq. ft, PORCH: 32 sq. ft,  
PATIO: 817 sq. ft

Floor Plan Created By V1photos.com, Measurements Deamed Highly Reliable But Not Guaranteed.

Disclaimer: Sizes and Dimensions are Approximate, Actual May Vary.



Alexis Foster  
970-310-6999  
alexisfoster@windermere.com



5620 Janna Drive, Loveland, CO 80538 – Lower Level



**TOTAL: 2260 sq. ft**  
BELOW GROUND: 1047 sq. ft, FLOOR 2: 1213 sq. ft  
EXCLUDED AREAS: STORAGE: 173 sq. ft, GARAGE: 796 sq. ft, PORCH: 32 sq. ft,  
PATIO: 817 sq. ft

Floor Plan Created By V1photos.com, Measurements Deamed Highly Reliable But Not Guaranteed.

Disclaimer: Sizes and Dimensions are Approximate, Actual May Vary.



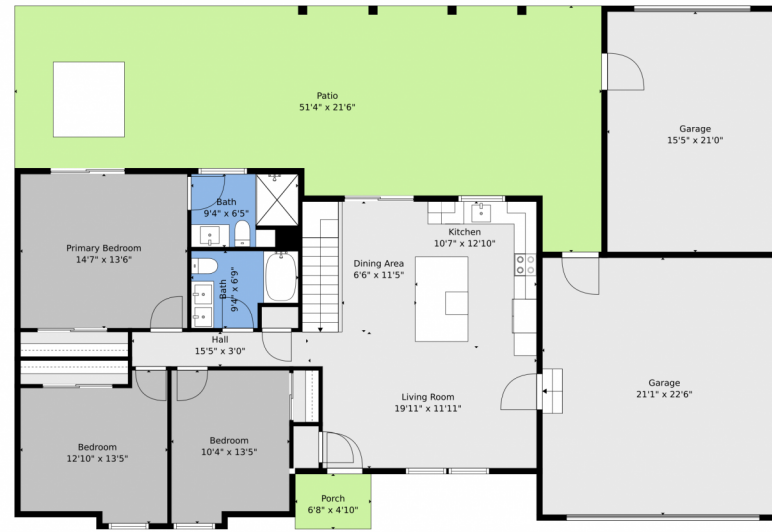
Alexis Foster  
970-310-6999  
alexisfoster@windermere.com



# 5620 Janna Drive, Loveland, CO 80538 – All Levels



Floor 1



Floor 2



**TOTAL: 2260 sq. ft**  
BELOW GROUND: 1047 sq. ft, FLOOR 2: 1213 sq. ft  
EXCLUDED AREAS: STORAGE: 173 sq. ft, GARAGE: 796 sq. ft, PORCH: 32 sq. ft,  
PATIO: 817 sq. ft

Floor Plan Created By V1photos.com, Measurements Deamed Highly Reliable But Not Guaranteed.

Disclaimer: Sizes and Dimensions are Approximate, Actual May Vary.



Alexis Foster  
970-310-6999  
alexisfoster@windermere.com



Scan code  
for more  
property  
details

