



4928 S Addison Way  
 Aurora, CO 80016  
 COMMUNITY: Tollgate Crossing

MLS # 6347827  
 PRICE \$575,000



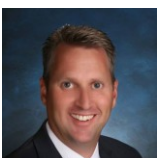
floorplan\_all\_0



Single Family 2857 SQFT 3 Beds 2/1 Baths 2 Car 0.15 Acre

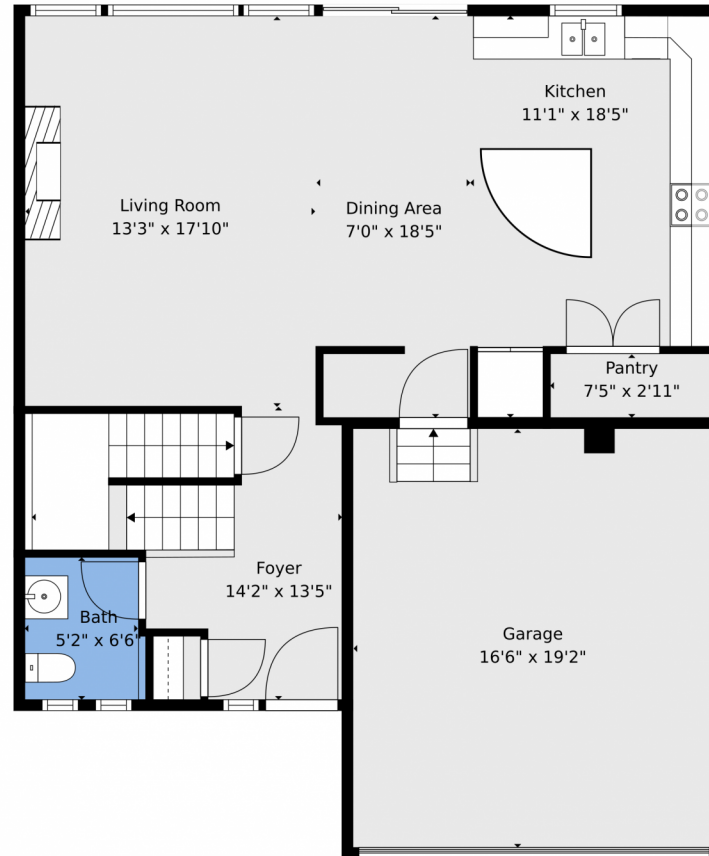
## PROPERTY DETAILS

Beautiful 3 bed, 3 bath, 2-story home with a loft and 2-car garage in Tollgate Crossing, backing to a greenbelt. Over 2000 sqft, it features a spacious kitchen with ample cabinets, a huge pantry, and a center island. The family room offers large windows and a cozy gas fireplace. The main floor boasts engineered wood floors and recessed lighting. Upstairs, you'll find 3 bedrooms, a large loft ideal for an office or playroom, and a primary suite with a walk-in closet and double sinks. There's also an upper-level laundry room and new carpet throughout. The unfinished basement has 10' ceilings and over 800 sqft for future expansion. Located in the Cherry Creek School district. Visit the Tollgate Crossing metro district website for more info.



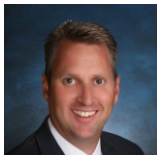
**Greg Dach**  
 303-525-9006  
 gregdach@remax.net





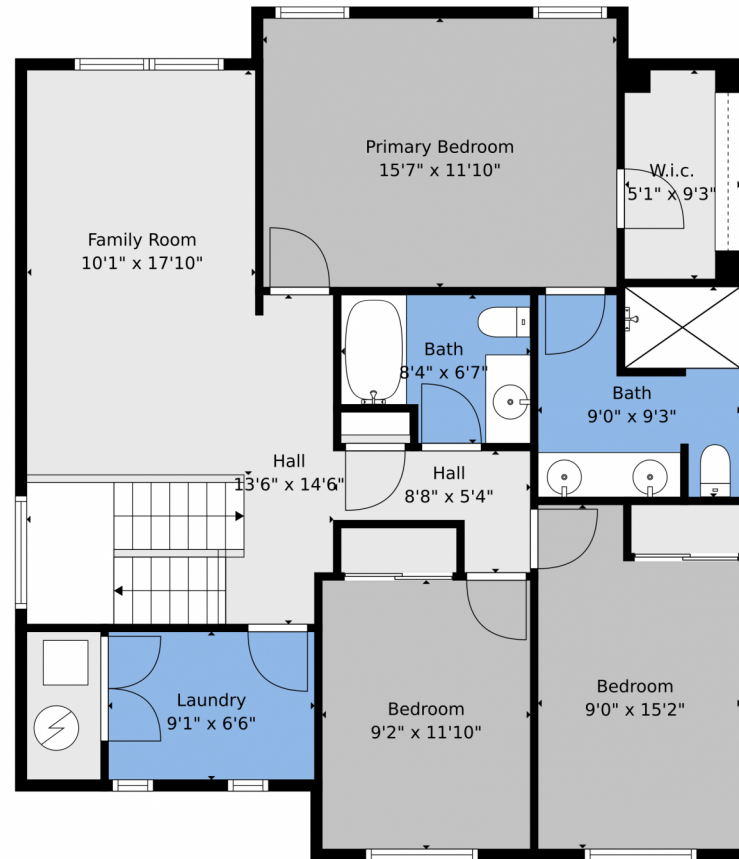
**TOTAL: 1850 sq. ft**  
BELOW GROUND: 0 sq. ft, FLOOR 2: 769 sq. ft, FLOOR 3: 1081 sq. ft  
EXCLUDED AREAS: BASEMENT: 752 sq. ft, GARAGE: 317 sq. ft  
Floor Plan Created By V1photos.com, Measurements Deamed Highly Reliable But Not Guaranteed.

Disclaimer: Sizes and Dimensions are Approximate, Actual May Vary.



**Greg Dach**  
303-525-9006  
gregdach@remax.net





**TOTAL: 1850 sq. ft**  
BELOW GROUND: 0 sq. ft, FLOOR 2: 769 sq. ft, FLOOR 3: 1081 sq. ft  
EXCLUDED AREAS: BASEMENT: 752 sq. ft, GARAGE: 317 sq. ft

Floor Plan Created By V1photos.com, Measurements Deamed Highly Reliable But Not Guaranteed.

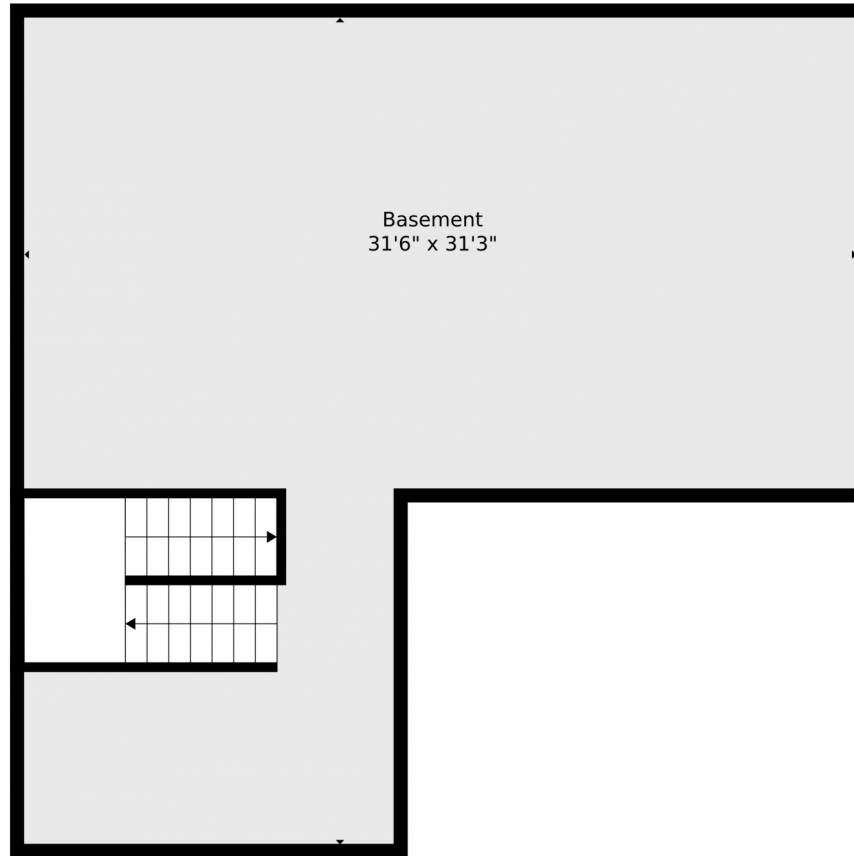


Disclaimer: Sizes and Dimensions are Approximate, Actual May Vary.



**Greg Dach**  
303-525-9006  
gregdach@remax.net





**TOTAL: 1850 sq. ft**  
BELOW GROUND: 0 sq. ft, FLOOR 2: 769 sq. ft, FLOOR 3: 1081 sq. ft  
EXCLUDED AREAS: BASEMENT: 752 sq. ft, GARAGE: 317 sq. ft  
Floor Plan Created By V1photos.com, Measurements Deamed Highly Reliable But Not Guaranteed.



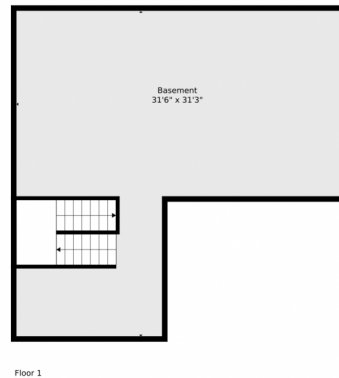
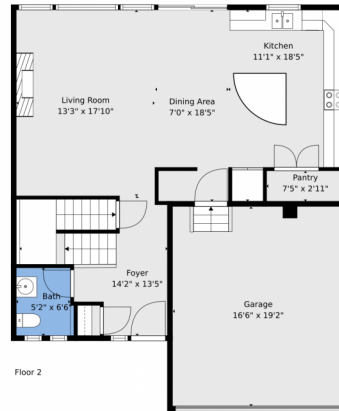
Disclaimer: Sizes and Dimensions are Approximate, Actual May Vary.



**Greg Dach**  
303-525-9006  
gregdach@remax.net





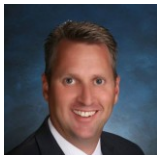


**TOTAL: 1850 sq. ft**  
BELOW GROUND: 0 sq. ft, FLOOR 2: 769 sq. ft, FLOOR 3: 1081 sq. ft  
EXCLUDED AREAS: BASEMENT: 752 sq. ft, GARAGE: 317 sq. ft

Floor Plan Created By V1photos.com, Measurements Deamed Highly Reliable But Not Guaranteed.



Disclaimer: Sizes and Dimensions are Approximate, Actual May Vary.



**Greg Dach**  
303-525-9006  
gregdach@remax.net

