

 Single Family

 2202 SQFT

 4 Beds

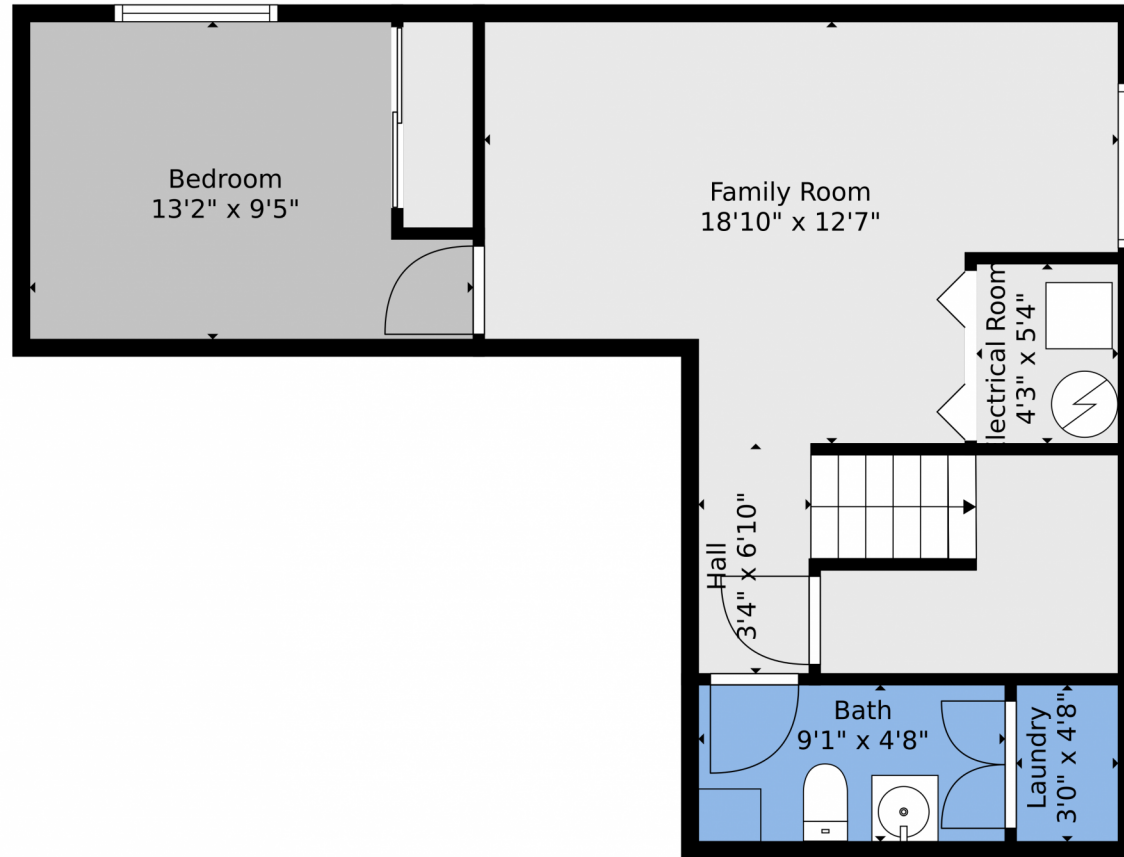
 3/1 Baths



**Taylor Haas**  
303-665-7368  
taylorh@coloradorpm.com  
<https://www.coloradorpm.com/available-rental-properties-denver>



14357 Woodrock Path, Colorado Springs, CO 80921 – Lower Level



**TOTAL: 2046 sq. ft**  
BELOW GROUND: 472 sq. ft, FLOOR 2: 609 sq. ft, FLOOR 3: 965 sq. ft  
EXCLUDED AREAS: ELECTRICAL ROOM: 23 sq. ft, GARAGE: 395 sq. ft, PORCH: 73 sq. ft,  
DECK: 160 sq. ft

Floor Plan Created By V1photos.com. Measurements Deamed Highly Reliable But Not Guaranteed.



Disclaimer: Sizes and Dimensions are Approximate, Actual May Vary.



**Taylor Haas**  
303-665-7368  
taylorh@coloradorpm.com  
<https://www.coloradorpm.com/available-rental-properties-denver>



Scan code  
for more  
property  
details



**TOTAL: 2046 sq. ft**  
BELOW GROUND: 472 sq. ft, FLOOR 2: 609 sq. ft, FLOOR 3: 965 sq. ft  
EXCLUDED AREAS: ELECTRICAL ROOM: 23 sq. ft, GARAGE: 395 sq. ft, PORCH: 73 sq. ft,  
DECK: 160 sq. ft

Floor Plan Created By V1photos.com, Measurements Deamed Highly Reliable But Not Guaranteed.



Disclaimer: Sizes and Dimensions are Approximate, Actual May Vary.



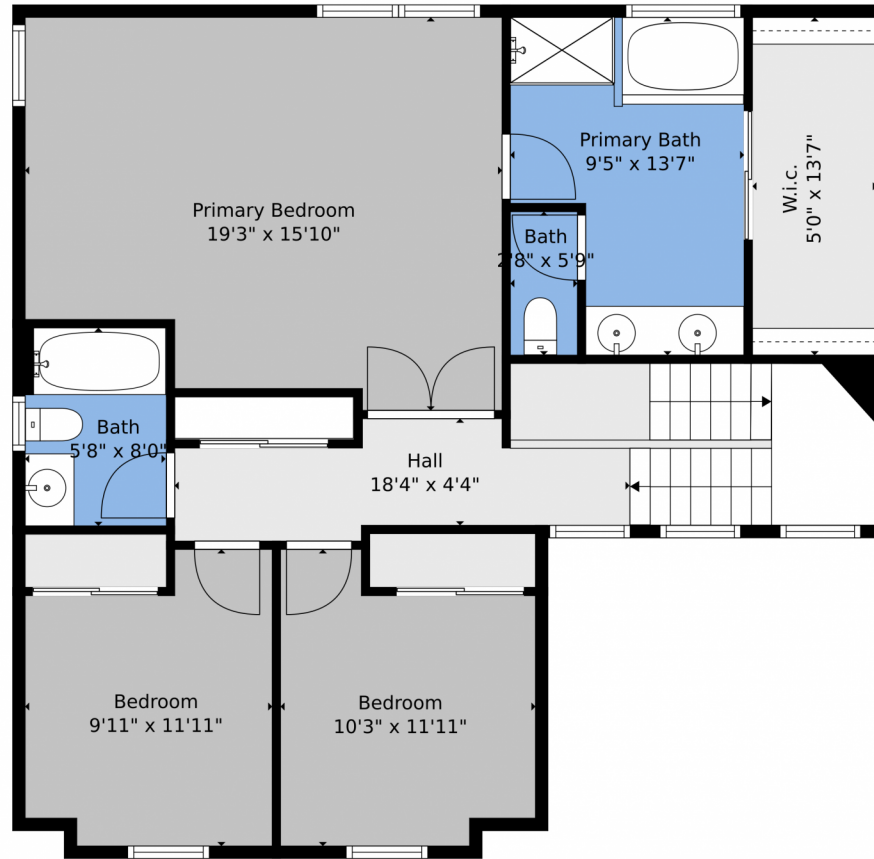
**Taylor Haas**  
303-665-7368  
taylorh@coloradorpm.com  
<https://www.coloradorpm.com/available-rental-properties-denver>



Scan code  
for more  
property  
details



# 14357 Woodrock Path, Colorado Springs, CO 80921 – 2nd Level



**TOTAL: 2046 sq. ft**  
BELOW GROUND: 472 sq. ft, FLOOR 2: 609 sq. ft, FLOOR 3: 965 sq. ft  
EXCLUDED AREAS: ELECTRICAL ROOM: 23 sq. ft, GARAGE: 395 sq. ft, PORCH: 73 sq. ft,  
DECK: 160 sq. ft

Floor Plan Created By V1photos.com. Measurements Deamed Highly Reliable But Not Guaranteed.



Disclaimer: Sizes and Dimensions are Approximate, Actual May Vary.



**Taylor Haas**  
303-665-7368  
taylorh@coloradorpm.com  
<https://www.coloradorpm.com/available-rental-properties-denver>



Scan code  
for more  
property  
details





# 14357 Woodrock Path, Colorado Springs, CO 80921 – All Levels



**TOTAL: 2046 sq. ft**  
BELOW GROUND: 472 sq. ft, FLOOR 2: 609 sq. ft, FLOOR 3: 965 sq. ft  
EXCLUDED AREAS: ELECTRICAL ROOM: 23 sq. ft, GARAGE: 395 sq. ft, PORCH: 73 sq. ft,  
DECK: 160 sq. ft

Floor Plan Created By V1photos.com, Measurements Deamed Highly Reliable But Not Guaranteed.



Disclaimer: Sizes and Dimensions are Approximate, Actual May Vary.



**Taylor Haas**  
303-665-7368  
taylorh@coloradorpm.com  
<https://www.coloradorpm.com/available-rental-properties-denver>

