



265 S Monroe St
 Denver, CO 80209
 COMMUNITY: Cherry Creek

MLS # 4304045
 PRICE \$1,074,000



Other



3698 SQFT



3 Beds



3/1 Baths



2 Car

PROPERTY DETAILS

Experience life in desirable Cherry Creek in this stunning attached home! The inviting floorplan features high ceilings and abundant natural light. The sunlit living room boasts large windows and beautiful hardwood floors. The updated kitchen, with granite counters and a gas cooktop, is perfect for gatherings. Enjoy cozy evenings by the fireplace in the family room or relax on the private back patio. The oversized primary bedroom offers vaulted ceilings, a Juliet balcony, and a spa-like bathroom. Upstairs, the spacious second bedroom has an en-suite bathroom. The basement includes a rec room with a wet bar, a bright bedroom with egress windows, and a steam shower. Enjoy low-maintenance living with no HOA and a two-car garage. Located just blocks from premier shopping and dining, this home is a must-see!

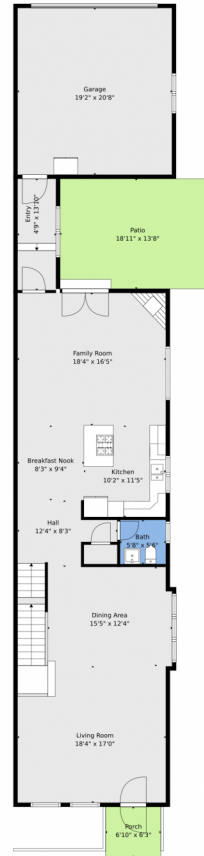


Amy Cammack
 303-981-4571
 amy@cammackgroup.com



Scan code
 for more
 property
 details





TOTAL: 3423 sq. ft
BELOW GROUND: 1025 sq. ft, FLOOR 2: 1236 sq. ft, FLOOR 3: 1162 sq. ft
EXCLUDED AREAS: ELECTRICAL ROOM: 61 sq. ft, BAY WINDOW: 9 sq. ft, PATIO: 257 sq. ft,
PORCH: 43 sq. ft, GARAGE: 395 sq. ft

Floor Plan Created By V1photos.com, Measurements Deamed Highly Reliable But Not Guaranteed.

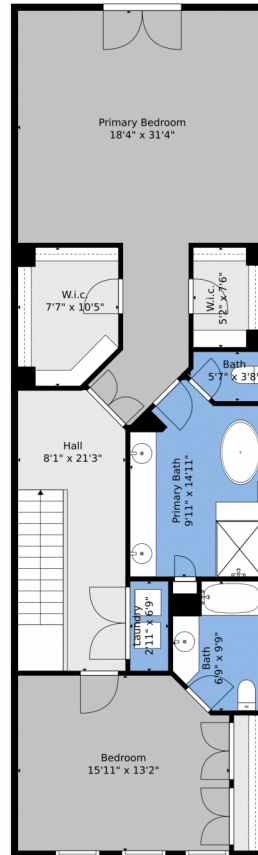


Disclaimer: Sizes and Dimensions are Approximate, Actual May Vary.



Amy Cammack
303-981-4571
amy@cammackgroup.com





TOTAL: 3423 sq. ft
BELOW GROUND: 1025 sq. ft, FLOOR 2: 1236 sq. ft, FLOOR 3: 1162 sq. ft
EXCLUDED AREAS: ELECTRICAL ROOM: 61 sq. ft, BAY WINDOW: 9 sq. ft, PATIO: 257 sq. ft,
PORCH: 43 sq. ft, GARAGE: 395 sq. ft

Floor Plan Created By V1photos.com, Measurements Deamed Highly Reliable But Not Guaranteed.



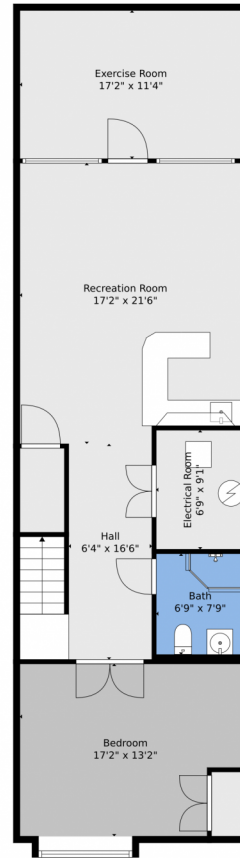
Disclaimer: Sizes and Dimensions are Approximate, Actual May Vary.



Amy Cammack
303-981-4571
amy@cammackgroup.com



Scan code
for more
property
details



TOTAL: 3423 sq. ft
BELOW GROUND: 1025 sq. ft, FLOOR 2: 1236 sq. ft, FLOOR 3: 1162 sq. ft
EXCLUDED AREAS: ELECTRICAL ROOM: 61 sq. ft, BAY WINDOW: 9 sq. ft, PATIO: 257 sq. ft,
PORCH: 43 sq. ft, GARAGE: 395 sq. ft

Floor Plan Created By V1photos.com, Measurements Deamed Highly Reliable But Not Guaranteed.



Disclaimer: Sizes and Dimensions are Approximate, Actual May Vary.



Amy Cammack
303-981-4571
amy@cammackgroup.com



Scan code
for more
property
details

265 S Monroe St, Denver, CO 80209 – All Levels



TOTAL: 3423 sq. ft
BELOW GROUND: 1025 sq. ft, FLOOR 2: 1236 sq. ft, FLOOR 3: 1162 sq. ft
EXCLUDED AREAS: ELECTRICAL ROOM: 61 sq. ft, BAY WINDOW: 9 sq. ft, PATIO: 257 sq. ft,
PORCH: 43 sq. ft, GARAGE: 395 sq. ft

Floor Plan Created By V1photos.com, Measurements Deamed Highly Reliable But Not Guaranteed.



Disclaimer: Sizes and Dimensions are Approximate, Actual May Vary.



Amy Cammack
303-981-4571
amy@cammackgroup.com



Scan code
for more
property
details