



5955 W Plymouth Drive
 Littleton, CO 80128
 COMMUNITY: Normandy Estates

MLS # 5874245

PRICE

\$1,195,000



Single Family



3485 SQFT



5 Beds



3 Baths



2 Car



0.33 Acre

PROPERTY DETAILS

This exceptional mid-century modern home by Frenchie Gratts offers stunning curb appeal with a circular driveway and welcoming courtyard. It features a second covered patio and an open patio off the living and family rooms, showcasing pristine hardwood floors and vaulted ceilings. The remodeled kitchen includes new cabinets and countertops, perfect for morning coffee. The spacious primary bedroom boasts views of the private yard, while the updated bath retains original architecture. There are two additional bedrooms or offices and a beautifully remodeled full bath on the main floor. The finished walk-out basement includes a family room, two more bedrooms with egress windows, and another full bath. Set on a 14,169 sq ft lot in Normandy Estates, this home is close to a park and the Columbine Knolls Pool and Tennis Club, with approximately 3,400 finished sq ft to enjoy.



Cheryl Lavan
 303-263-1050
 lavan@totalspeed.com



Scan code
 for more
 property
 details





TOTAL: 3122 sq. ft
BELOW GROUND: 1073 sq. ft, FLOOR 2: 2049 sq. ft
EXCLUDED AREAS: STORAGE: 136 sq. ft, ELECTRICAL ROOM: 121 sq. ft, LOW CEILING: 535 sq. ft,
PATIO: 908 sq. ft, COVERED PATIO: 371 sq. ft, PORCH: 470 sq. ft,
GARAGE: 510 sq. ft, BAY WINDOW: 5 sq. ft, FIREPLACE: 17 sq. ft

Floor Plan Created By V1photos.com, Measurements Deamed Highly Reliable But Not Guaranteed.



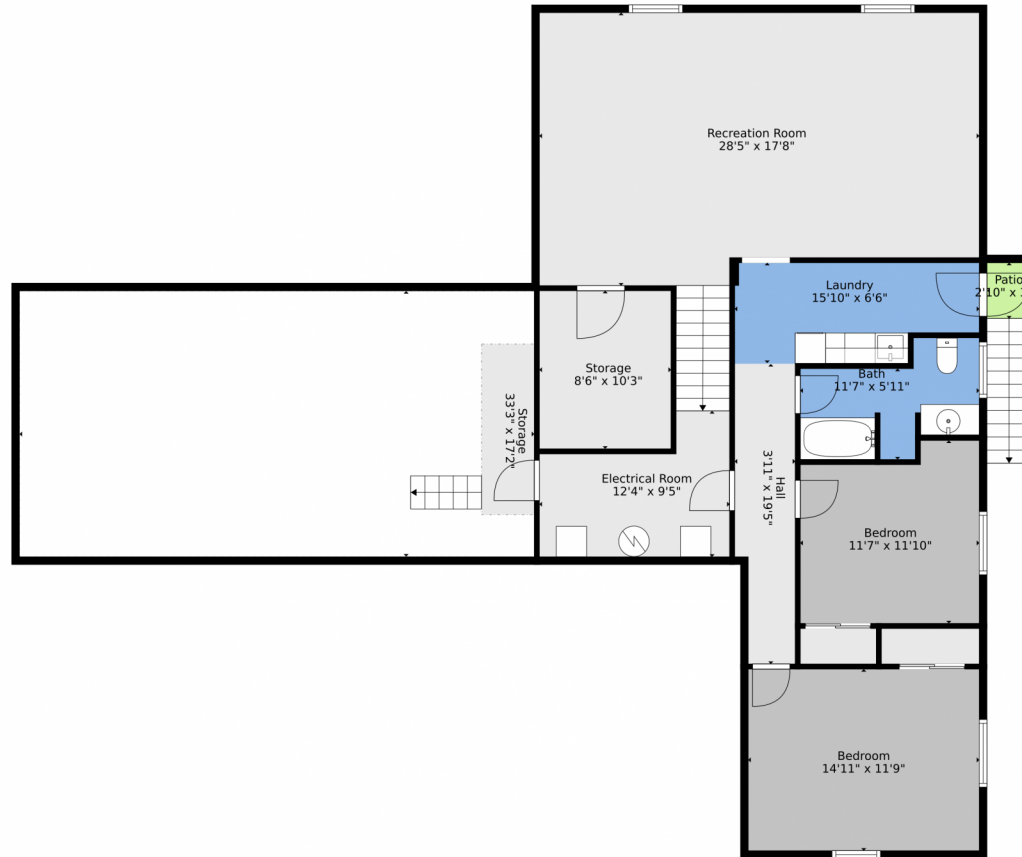
Disclaimer: Sizes and Dimensions are Approximate, Actual May Vary.



Cheryl Lavan
303-263-1050
lavan@totalspeed.com



5955 W Plymouth Drive, Littleton, CO 80128 – Basement



TOTAL: 3122 sq. ft
BELOW GROUND: 1073 sq. ft, FLOOR 2: 2049 sq. ft
EXCLUDED AREAS: STORAGE: 136 sq. ft, ELECTRICAL ROOM: 121 sq. ft, LOW CEILING: 535 sq. ft,
PATIO: 908 sq. ft, COVERED PATIO: 371 sq. ft, PORCH: 470 sq. ft,
GARAGE: 510 sq. ft, BAY WINDOW: 5 sq. ft, FIREPLACE: 17 sq. ft

Floor Plan Created By V1photos.com, Measurements Deamed Highly Reliable But Not Guaranteed.



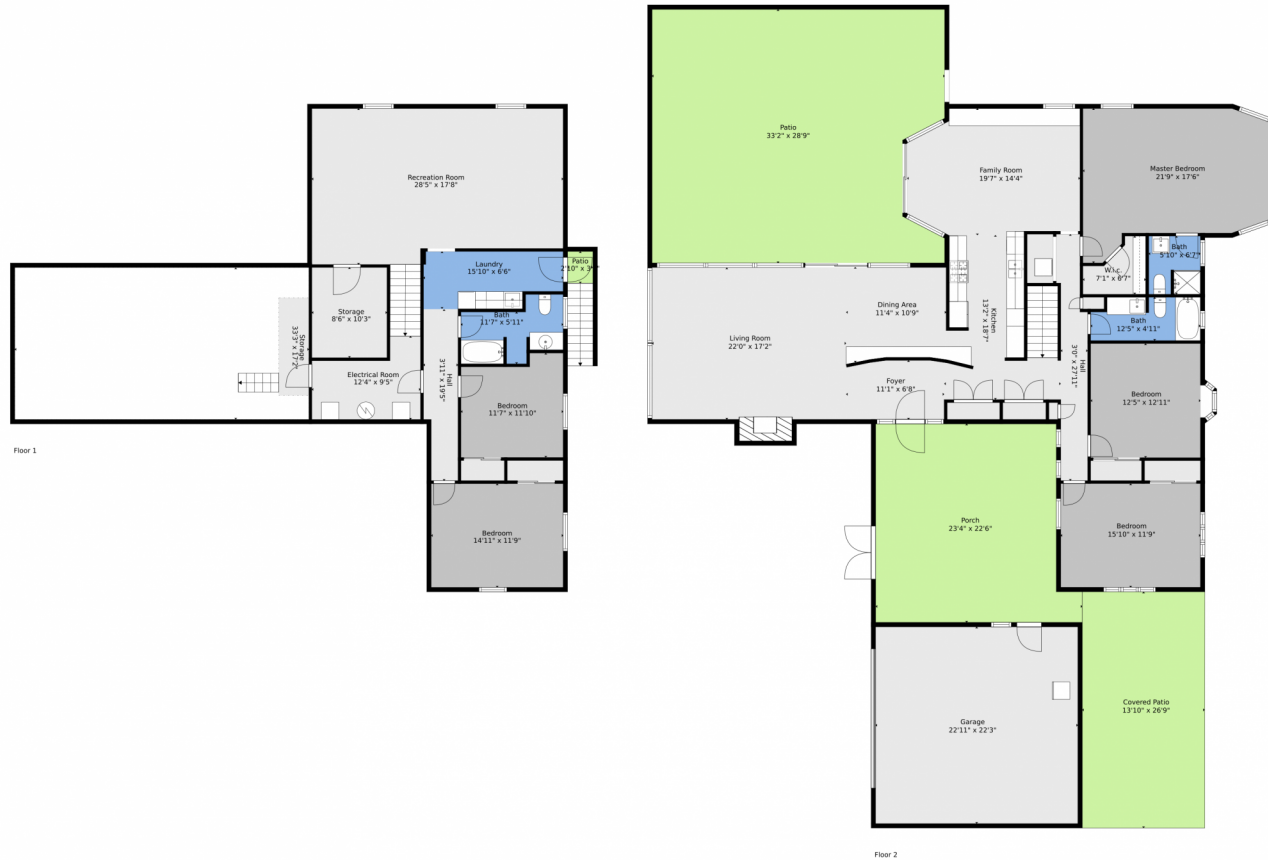
Disclaimer: Sizes and Dimensions are Approximate, Actual May Vary.



Cheryl Lavan
303-263-1050
lavan@totalspeed.com



5955 W Plymouth Drive, Littleton, CO 80128 – All Levels



TOTAL: 3122 sq. ft
BELOW GROUND: 1073 sq. ft, FLOOR 2: 2049 sq. ft
EXCLUDED AREAS: STORAGE: 136 sq. ft, ELECTRICAL ROOM: 121 sq. ft, LOW CEILING: 535 sq. ft,
PATIO: 908 sq. ft, COVERED PATIO: 371 sq. ft, PORCH: 470 sq. ft,
GARAGE: 510 sq. ft, BAY WINDOW: 5 sq. ft, FIREPLACE: 17 sq. ft

Floor Plan Created By V1photos.com, Measurements Deamed Highly Reliable But Not Guaranteed.



Disclaimer: Sizes and Dimensions are Approximate, Actual May Vary.



Cheryl Lavan
303-263-1050
lavan@totalspeed.com

