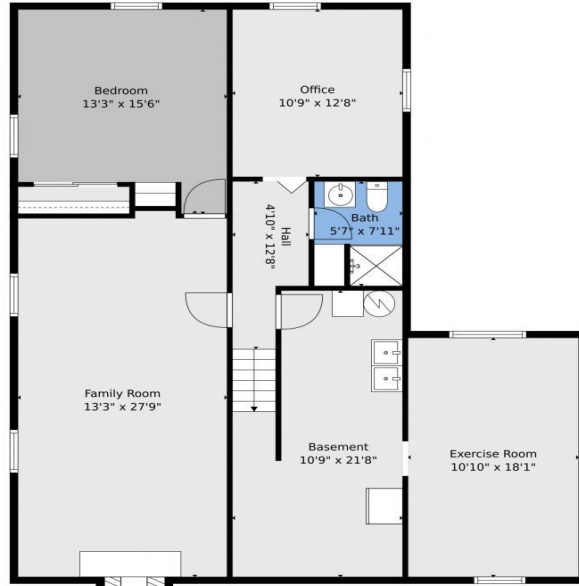




667 Cody Court
Lakewood, CO 80215

floorplan_single_0



floorplan_single_1



floorplan_all_0



Single Family



2708 SQFT

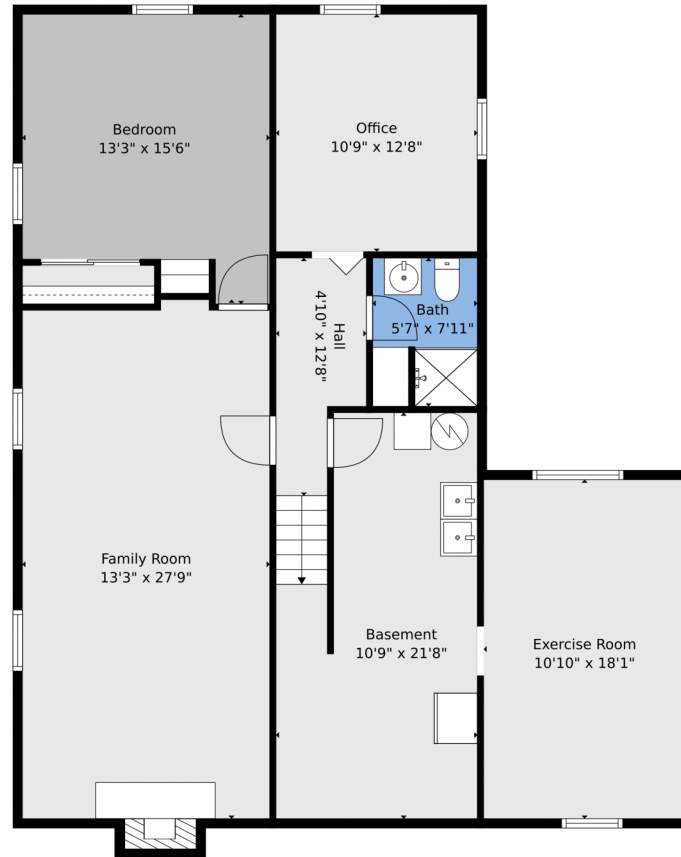


Michelle Davis
720-428-9388
michelled@cazaposh.com



Scan code
for more
property
details





TOTAL: 2093 sq. ft
BELOW GROUND: 843 sq. ft, FLOOR 2: 1250 sq. ft
EXCLUDED AREAS: EXERCISE ROOM: 202 sq. ft, BASEMENT: 205 sq. ft, FIREPLACE: 16 sq. ft,
GARAGE: 461 sq. ft

Floor Plan Created By V1photos.com. Measurements Deamed Highly Reliable But Not Guaranteed.

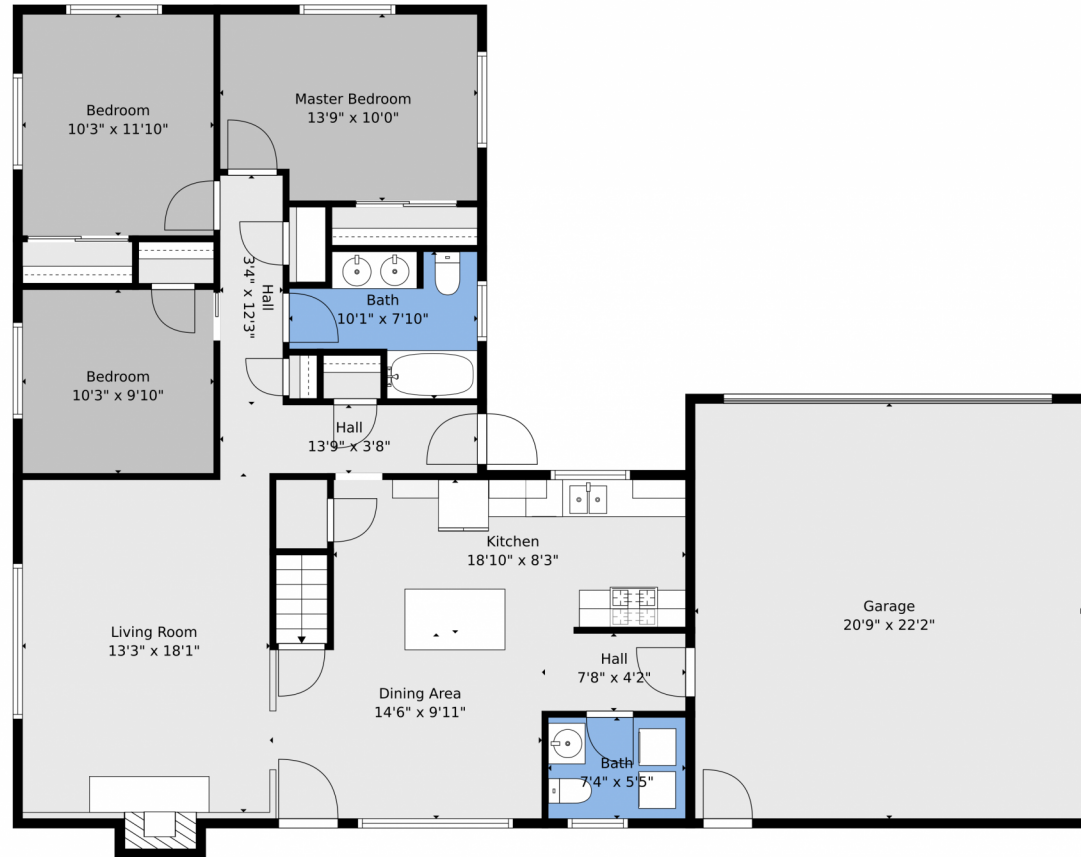


Disclaimer: Sizes and Dimensions are Approximate, Actual May Vary.



Michelle Davis
720-428-9388
michelled@cazaposh.com





TOTAL: 2093 sq. ft
BELOW GROUND: 843 sq. ft, FLOOR 2: 1250 sq. ft
EXCLUDED AREAS: EXERCISE ROOM: 202 sq. ft, BASEMENT: 205 sq. ft, FIREPLACE: 16 sq. ft,
GARAGE: 461 sq. ft

Floor Plan Created By V1photos.com. Measurements Deamed Highly Reliable But Not Guaranteed.



Disclaimer: Sizes and Dimensions are Approximate, Actual May Vary.



Michelle Davis
720-428-9388
michelled@cazapos.com



Scan code for more property details

667 Cody Court, Lakewood, CO 80215 – floorplan_all_0



Floor 1

Floor 2

TOTAL: 2093 sq. ft
BELOW GROUND: 843 sq. ft, FLOOR 2: 1250 sq. ft
EXCLUDED AREAS: EXERCISE ROOM: 202 sq. ft, BASEMENT: 205 sq. ft, FIREPLACE: 16 sq. ft,
GARAGE: 461 sq. ft

Floor Plan Created By V1photos.com, Measurements Deamed Highly Reliable But Not Guaranteed.



Disclaimer: Sizes and Dimensions are Approximate, Actual May Vary.



Michelle Davis
720-428-9388
michelled@cazaposh.com

