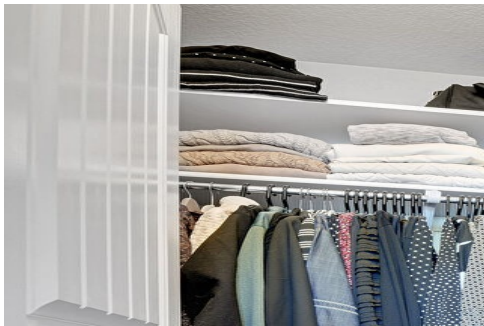
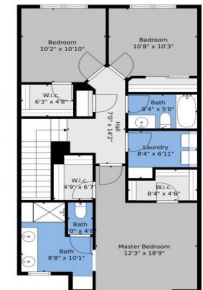




5410 West 96th Avenue
Westminster, CO 80020
COMMUNITY: Hyland Village



floorplan_single_2



Townhouse

2320 SQFT

3 Beds

3/1 Baths

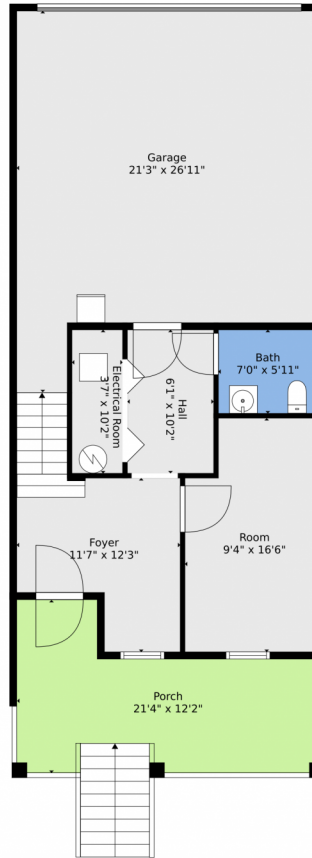
2 Car



James (Jim) Candy
303-919-3554
jim@jimcandy.net



5410 West 96th Avenue, Westminster, CO 80020 – Lower Level



TOTAL: 2113 sq. ft
BELOW GROUND: 405 sq. ft, FLOOR 2: 845 sq. ft, FLOOR 3: 863 sq. ft
EXCLUDED AREAS: ELECTRICAL ROOM: 36 sq. ft, PORCH: 195 sq. ft, GARAGE: 485 sq. ft,
BALCONY: 196 sq. ft

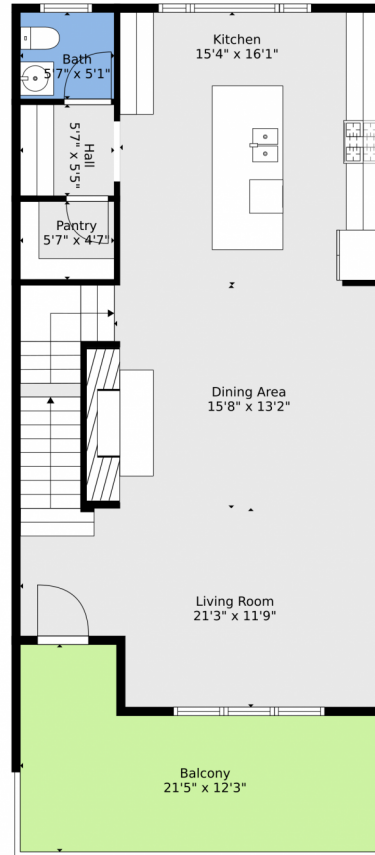
Floor Plan Created By V1photos.com, Measurements Deamed Highly Reliable But Not Guaranteed.

Disclaimer: Sizes and Dimensions are Approximate, Actual May Vary.



James (Jim) Candy
303-919-3554
jim@jimcandy.net





TOTAL: 2113 sq. ft
BELOW GROUND: 405 sq. ft, FLOOR 2: 845 sq. ft, FLOOR 3: 863 sq. ft
EXCLUDED AREAS: ELECTRICAL ROOM: 36 sq. ft, PORCH: 195 sq. ft, GARAGE: 485 sq. ft,
BALCONY: 196 sq. ft

Floor Plan Created By V1photos.com, Measurements Deamed Highly Reliable But Not Guaranteed.



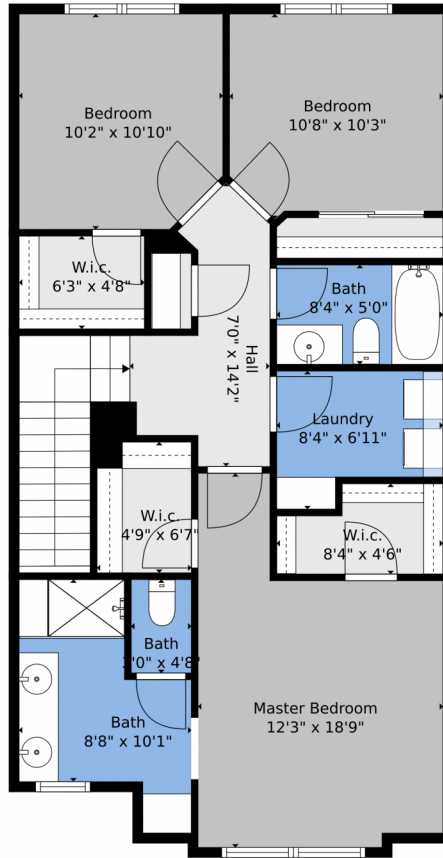
Disclaimer: Sizes and Dimensions are Approximate, Actual May Vary.



James (Jim) Candy
303-919-3554
jim@jimcandy.net



5410 West 96th Avenue, Westminster, CO 80020 – 3rd Level



TOTAL: 2113 sq. ft
BELOW GROUND: 405 sq. ft, FLOOR 2: 845 sq. ft, FLOOR 3: 863 sq. ft
EXCLUDED AREAS: ELECTRICAL ROOM: 36 sq. ft, PORCH: 195 sq. ft, GARAGE: 485 sq. ft,
BALCONY: 196 sq. ft

Floor Plan Created By V1photos.com, Measurements Deamed Highly Reliable But Not Guaranteed.



Disclaimer: Sizes and Dimensions are Approximate, Actual May Vary.



James (Jim) Candy
303-919-3554
jim@jimcandy.net



Scan code
for more
property
details



5410 West 96th Avenue, Westminster, CO 80020 – All Levels



TOTAL: 2113 sq. ft
 BELOW GROUND: 405 sq. ft, FLOOR 2: 845 sq. ft, FLOOR 3: 863 sq. ft
 EXCLUDED AREAS: ELECTRICAL ROOM: 36 sq. ft, PORCH: 195 sq. ft, GARAGE: 485 sq. ft,
 BALCONY: 196 sq. ft

Floor Plan Created By V1photos.com, Measurements Deamed Highly Reliable But Not Guaranteed.



Disclaimer: Sizes and Dimensions are Approximate, Actual May Vary.



James (Jim) Candy
 303-919-3554
 jim@jimcandy.net

