




 Single Family

 1701 SQFT

 3 Beds

 2/1 Baths



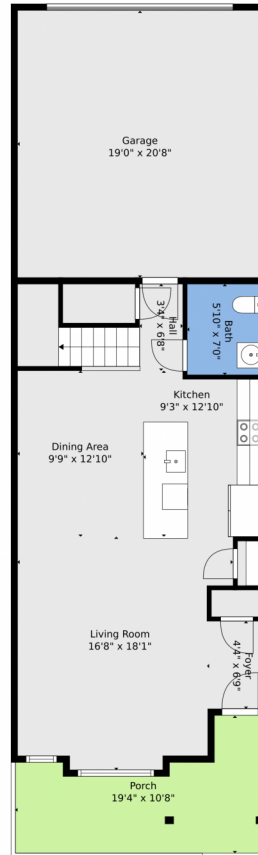
Taylor Haas
303-665-7368
taylorh@coloradorpm.com
<https://www.coloradorpm.com/available-rental-properties-denver>



Scan code
for more
property
details



6155 White Wolf Point, Colorado Springs, CO 80925 – Main



TOTAL: 1554 sq. ft
FLOOR 1: 687 sq. ft, FLOOR 2: 867 sq. ft
EXCLUDED AREAS: GARAGE: 392 sq. ft, PORCH: 140 sq. ft, ELECTRICAL ROOM: 22 sq. ft
Floor Plan Created By V1photos.com, Measurements Deamed Highly Reliable But Not Guaranteed.



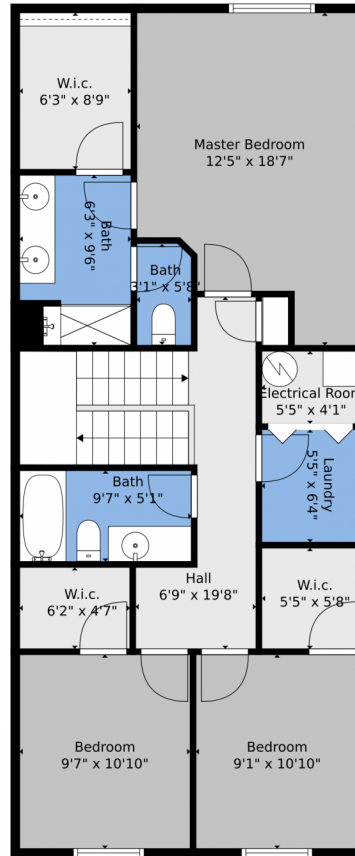
Disclaimer: Sizes and Dimensions are Approximate, Actual May Vary.



Taylor Haas
303-665-7368
taylorh@coloradorpm.com
<https://www.coloradorpm.com/available-rental-properties-denver>



6155 White Wolf Point, Colorado Springs, CO 80925 – 2nd Level



TOTAL: 1554 sq. ft
FLOOR 1: 687 sq. ft, FLOOR 2: 867 sq. ft
EXCLUDED AREAS: GARAGE: 392 sq. ft, PORCH: 140 sq. ft, ELECTRICAL ROOM: 22 sq. ft
Floor Plan Created By V1photos.com, Measurements Deamed Highly Reliable But Not Guaranteed.



Disclaimer: Sizes and Dimensions are Approximate, Actual May Vary.



Taylor Haas
303-665-7368
taylorh@coloradorpm.com
<https://www.coloradorpm.com/available-rental-properties-denver>



6155 White Wolf Point, Colorado Springs, CO 80925 – All Levels



TOTAL: 1554 sq. ft
FLOOR 1: 687 sq. ft, FLOOR 2: 867 sq. ft
EXCLUDED AREAS: GARAGE: 392 sq. ft, PORCH: 140 sq. ft, ELECTRICAL ROOM: 22 sq. ft
Floor Plan Created By V1photos.com, Measurements Deamed Highly Reliable But Not Guaranteed.



Disclaimer: Sizes and Dimensions are Approximate, Actual May Vary.



Taylor Haas
303-665-7368
taylorh@coloradorpm.com
<https://www.coloradorpm.com/available-rental-properties-denver>

