


 Single Family

 1200 SQFT

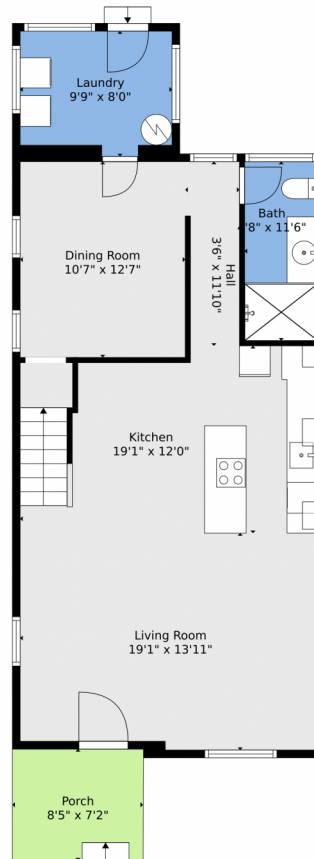
 2 Beds

 2 Baths



**Taylor Haas**  
303-665-7368  
taylorh@coloradorpm.com  
<https://www.coloradorpm.com/available-rental-properties-denver>





**TOTAL: 1145 sq. ft**  
FLOOR 1: 798 sq. ft, FLOOR 2: 347 sq. ft  
EXCLUDED AREAS: PORCH: 60 sq. ft, LOW CEILING: 72 sq. ft

Floor Plan Created By V1photos.com, Measurements Deamed Highly Reliable But Not Guaranteed.



Disclaimer: Sizes and Dimensions are Approximate, Actual May Vary.



**Taylor Haas**

303-665-7368

taylorh@coloradorpm.com

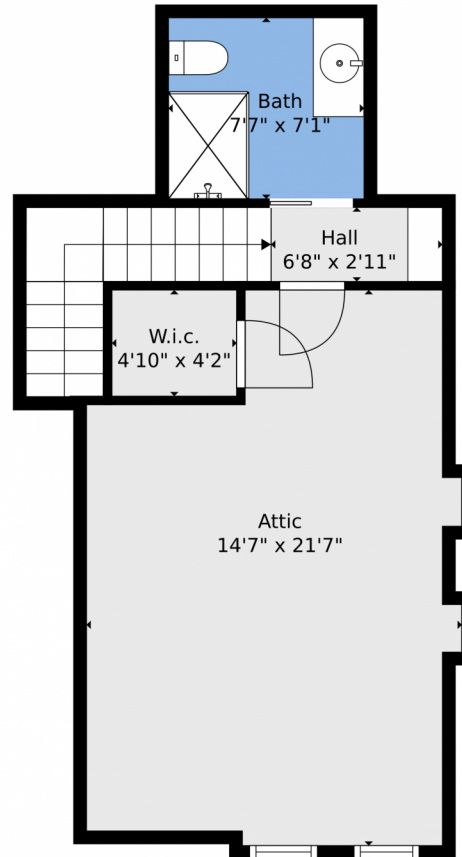
<https://www.coloradorpm.com/available-rental-properties-denv>



Scan code  
for more  
property  
details



3216 Curtis Street, Denver, CO 80205 – 2nd Level



**TOTAL: 1145 sq. ft**  
FLOOR 1: 798 sq. ft, FLOOR 2: 347 sq. ft  
EXCLUDED AREAS: PORCH: 60 sq. ft, LOW CEILING: 72 sq. ft

Floor Plan Created By V1photos.com, Measurements Deamed Highly Reliable But Not Guaranteed.



Disclaimer: Sizes and Dimensions are Approximate, Actual May Vary.



**Taylor Haas**

303-665-7368

taylorh@coloradorpm.com

<https://www.coloradorpm.com/available-rental-properties-denver>



Scan code  
for more  
property  
details



# 3216 Curtis Street, Denver, CO 80205 – All Levels



**TOTAL: 1145 sq. ft**  
FLOOR 1: 798 sq. ft, FLOOR 2: 347 sq. ft  
EXCLUDED AREAS: PORCH: 60 sq. ft, LOW CEILING: 72 sq. ft

Floor Plan Created By V1photos.com, Measurements Deamed Highly Reliable But Not Guaranteed.



Disclaimer: Sizes and Dimensions are Approximate, Actual May Vary.



**Taylor Haas**  
303-665-7368  
taylorh@coloradorpm.com  
<https://www.coloradorpm.com/available-rental-properties-denver>



Scan code  
for more  
property  
details

